



wyldNetworks

Planet Earth, we got you covered
PING Update #5 July 2025



BRIGHT SPARKS: How IoT can deliver true energy security

Welcome to **PING**, the monthly update from the team at **wyldNetworks**

NEW OPPORTUNITIES AND REVENUES GENERATING REAL GROWTH

Welcome to the July edition of PING. We hope that you get some useful insights and information on our progress as we continue to find new opportunities and markets in 2025.

GAINING COMMERCIAL TRACTION

We are now entering a new phase in Wyld Networks' journey—one defined not by prototypes, but by real-world deployments, growing customer orders, and commercial traction.

I'm proud to report that Wyld has delivered its first commercial sales of our satellite IoT solutions. In Q1 2025, we completed initial shipments generating MSEK 0.5 in direct sales, contributing to total operating income of MSEK 2.05 for the quarter.

UK GOVT MAKES CASH PAYMENT

Wyld Networks has received a payment of MSEK 5.8 from the UK government in recognition of its ongoing research and development into satellite-based Internet of Things (IoT).
([more information overleaf](#))

EMPOWERING CORTEVA

In Q2 Wyld Networks has landed its first commercial order in the United States — a SEK 250,000 pilot agreement with agricultural powerhouse Corteva Inc., marking a major entry into the American market ([see more on p.4](#))

WYLD PARTNERS WITH MYRIOTA TO EXPAND SATELLITE IOT

We're pleased to announce a new partnership with Myriota, a leading provider of direct-to-satellite connectivity. By integrating Myriota's UltraLite network into Wyld Connect®, we're expanding low-power, remote IoT coverage across the United States and South America.

This collaboration will support key sectors including agriculture, energy, and environmental monitoring, offering scalable, real-time data solutions in areas beyond the reach of traditional networks.
([hear more about this partnership p.5](#))

But this is just the beginning...

These early revenues validate our technology—and more importantly, confirm that customers are now ready to buy at scale. This marks our transition from a development-led business into a truly commercial one.

We hope you enjoy this month's updates...

the team at Wyld

Alastair Williamson, CEO



“These early revenues validate our technology”

Welcome to **PING**, the new monthly update from the team at **wyldNetworks**

WYLD RECEIVES 5.8 MSEK CASH PAYMENT FROM UK GOVERNMENT TO DRIVE SATELLITE IoT INNOVATION

CAMBRIDGE, UK – 10 June 2025

Wyld Networks has received 5.8 million SEK cash payment from the UK government to support its research and development of satellite-based IoT connectivity—reinforcing the growing strategic importance of low-power, off-grid data networks.

The payment recognises Wyld’s role in enabling critical infrastructure in sectors where traditional connectivity falls short. From agriculture and energy to defense, Wyld’s satellite IoT terminals are designed to deliver real-time data in places mobile networks can’t reach.

**“We’re solving a real-world problem—
and the demand is growing fast”**

— Christopher J. Caswell, CFO, Wyld Networks

The funding follows Wyld’s expanding international footprint and supports continued innovation in data gathering, remote monitoring, and sustainability. As off-grid connectivity becomes essential for global industries, government support helps accelerate the company’s readiness to scale.

wyldNetworks an overview



GET CONNECTED

Getting useful data from remote locations, reliably and cheaply, is a challenge for many businesses.

Discover how using our connectivity solutions is helping our customers provide 100% effective global coverage for their company.

[PLAY VIDEO](#)

WYLD WINS FIRST U.S. ORDER WITH GLOBAL AG LEADER CORTEVA

INDIANA, USA – 27 June 2025

Wyld Networks has secured its first commercial order in the United States—a 250,000 SEK pilot agreement with Corteva Inc., one of the world’s largest and most influential agricultural companies.

Corteva, listed on the New York Stock Exchange (CTVA), operates across 70+ countries and employs over 22,000 staff. This pilot will test Wyld’s satellite IoT system across remote agricultural zones, with the aim of streamlining data collection in areas with little to no cellular coverage.



The deal follows recent FCC and U.S. patent approvals for Wyld, and signals a growing appetite for resilient, satellite-first IoT solutions. With Corteva’s reach and scale, the pilot represents a significant opportunity for expansion into full deployment across global sites.



“It’s a clear signal that Wyld’s technology is ready to scale in one of the world’s most advanced agricultural economies”

— Alastair Williamson, CEO

WYLD NETWORKS AND MYRIOTA TO ACCELERATE SATELLITE IOT DEPLOYMENT

Wyld Networks has signed a multi-year agreement with Australian-based Myriota to integrate their satellite connectivity into the Wyld Connect ecosystem, expanding IoT coverage across the United States and South America. This partnership represents a major step forward in delivering scalable, low-power, and affordable connectivity for remote and underserved regions.

“The United States is the single largest market for satellite IoT, and this collaboration enables us to move faster, go further, and serve more customers than ever before”

— Alastair Williamson
CEO of Wyld Networks

Wyld Networks continues to build momentum in the global IoT landscape with the announcement of a strategic partnership with Myriota, a leading provider of direct-to-satellite connectivity. By integrating the Myriota UltraLite network with Wyld Connect, Wyld Networks strengthens its satellite capabilities and opens the door to a wider range of customer applications—starting with deployments in the US, and with plans to expand into South America.

The US alone is expected to account for 30% of the projected \$15.5 billion global satellite IoT market by 2034. The addition of Myriota’s low-power, cost-effective network to Wyld’s offering is a key move in addressing growing demand from industries such as agriculture, oil and gas, utilities, and environmental monitoring—sectors that increasingly rely on real-time data from remote and hard-to-reach areas.

“We’re delighted to welcome Wyld Networks into the Myriota UltraLite ecosystem,” says Ben Cade, CEO of Myriota. “Their innovative approach to satellite IoT aligns perfectly with our mission to provide scalable, energy-efficient connectivity, even in the most remote parts of the world.”

Wyld is already working with its first set of joint customers with Myriota, deploying sensor networks across rural and remote locations to enable real-time monitoring, predictive analytics, and operational insights. The partnership will enhance interoperability and increase resilience across global networks, giving customers greater flexibility and reach.

With this agreement, Wyld Networks adds a vital new partner to its growing portfolio of satellite connectivity options, reinforcing its position as a leader in decentralized, direct-to-satellite IoT services.

Myriota GLOBALLY POWERING



EXTENDED COVERAGE
Seamless IoT connectivity in under-served and remote areas



REAL-WORLD APPLICATIONS
Supports agriculture, energy, utilities, and environmental monitoring



SCALABLE & EFFICIENT
Enables real-time data from low-power sensors with minimal infrastructure



MARKET OPPORTUNITY
The U.S. alone is forecasted to account for 30% of the \$15.5B global satellite IoT market by 2034

“We’re delighted to welcome Wyld Networks into the Myriota UltraLite ecosystem”

— Ben Cade, CEO, Myriota

WYLD IN BRAZIL: CONNECTING AGRICULTURE TO THE FUTURE

Inside Agrishow 2025 — and why
satellite IoT is powering the
world's breadbasket





WYLD AT AGRISHOW 2025: BRAZIL'S PREMIER AGRI-TECH SHOWCASE

In the sweltering April heat of Ribeirão Preto, Brazil, thousands of industry leaders, tech innovators, and farmers gathered for Agrishow 2025—Latin America's largest and most influential agri-tech event. For Wyld Networks, the stakes were high and the timing was perfect.

“We're not just selling a product—we're showing how Brazil can lead the next global agricultural revolution,” said André Vale, Wyld's Regional Sales Director for Latin America. “This show put us in front of the right people. From purchase agreements to strategic partnerships, the outcomes are real.”

WHY AGRISHOW MATTERS

Held every year in the heart of Brazil's agricultural belt, Agrishow is more than just a trade fair—it's a barometer of where farming is headed, and a launchpad for innovations that shape how the world grows its food. According to PwC and the event organizers, it is the only show that spans all crop types and farm sizes, and is considered the leading exhibition for next-generation agri-solutions.

This year, over 800 companies from around the world participated, showcasing technologies ranging from autonomous harvesters to drone mapping and—most critically—sensor-based connectivity. It's a space where problems meet solutions, where the global supply chain's most essential links are reimaged in real time.

“This show put us in front of the right people. From purchase agreements to strategic partnerships, the outcomes are real”

Charles Barret, CEO, Ohlo No solo at the wyldNetworks stand

WHY THE WORLD NEEDS BRAZIL

This year's show carried the bold tagline: "Why the World Needs Brazil"—and for good reason. Brazil is not just a powerhouse in agriculture; it's an essential artery in the global food system. The country is the largest exporter of soybeans, sugar, orange juice, and beef, and it ranks in the top three for corn and coffee.

With over 66 million hectares of cultivated land, vast freshwater reserves, and year-round growing seasons, Brazil holds a unique geographic and climatic advantage. But that also makes it a pressure point for global food security, climate resilience, and data-driven sustainability.

"Brazil is already feeding the world, now the challenge is doing it smarter, cleaner, and faster—and that's where Wyld comes in."

André Vale,
wyld Sales Director, South America





BRAZIL'S CHALLENGES — AND WYLD'S ROLE

Despite its enormous potential, Brazilian agriculture faces growing headwinds:

- ❑ **Deforestation pressures in the Amazon**
- ❑ **Soil degradation and water management challenges**
- ❑ **Lack of connectivity in key producing regions**
- ❑ **Climate volatility, including record droughts and flooding**

Wyld's solutions directly address these. In partnership with Ipiranga Agroindustrial, a sugar and ethanol producer, Wyld has already deployed over 450 terminals for weather and emissions monitoring. These help companies comply with environmental regulations and optimize operations—at scale and off-grid.

Additionally, a 10,000-unit livestock collar project is in early stages with a major Brazilian ag-tech firm, enabling real-time herd monitoring to prevent disease outbreaks and improve traceability in meat exports.

"Satellite IoT isn't a luxury anymore—it's a necessity," Vale explained. "If Brazil wants to lead in sustainable, precision farming, we need to connect the entire map. That's what Wyld is here to do."

**"Satellite IoT isn't a luxury
anymore—it's a necessity,"**

Andre Vale, Wyld South America Sales
Director and Junior Dos Santos, R.V Agro

THE INCREASING IMPORTANCE OF SENSOR-DRIVEN AGRICULTURE

One of Agrishow 2025's five official pillars was the rise of sensors and connected agriculture—a category that plays directly to Wyld's strengths. From soil probes to livestock collars, data is now central to how farms are managed, irrigated, and monetized. But much of rural Brazil lacks reliable mobile connectivity, which limits the value of even the most advanced agri-tech.

That's where Wyld's satellite IoT solutions step in.

"We had farmers walk right up to the booth and say, 'I need this now. My land has no signal, but I still need to know what's happening with my crops,'" said Vale.

"There's an urgency here that's hard to ignore. These aren't theoretical problems—they're real, daily pain points."

Wyld's stand drew heavy foot traffic, with live demonstrations of Wyld Connect terminals transmitting sensor data in real time—even in areas with zero cell coverage. Several deals were initiated on the spot, with Vale and the Latin America team deepening relationships with distributors, agribusiness owners, and agri-tech partners.

REVENUE, RECOGNITION, RESULTS

Wyld's presence at Agrishow was more than just creating visibility—it delivered real traction.

"We closed deals. We got on the radar of some of the region's biggest players. And most importantly, we proved our tech in front of the people who matter," said Vale. "The commercial outcomes from this week will be felt for months—and years—to come."

With Brazil's agricultural exports surging, and IoT adoption accelerating across South America, Wyld's presence at Agrishow is not just a regional story. It's a signal to the global market: the era of satellite-connected agriculture is no longer emerging—it's arrived.

"We closed deals. We got on the radar of some of the region's biggest players. And most importantly, we proved our tech in front of the people who matter"





wyldNetworks

customer conversation



ON THE GROUND

We join Ohlo No Solo at a Wyld Sensor deployment in Brazil

[PLAY VIDEO](#)



Plugged in

The increasing importance
of energy security

Energy Security Is National Security

Why Countries Must Act Now — And How Wyld Networks Delivers a Smarter Defence

Introduction: The Age of Infrastructure Warfare

In the 21st century, wars are no longer just fought on battlefields — they're fought in power stations, pipelines, and data centers. Energy security, once seen as a background concern of economists and engineers, is now front and centre of global strategic thinking. Without reliable access to energy, no country can feed its people, defend its territory, or maintain civil order.

In fact, energy, food, and military security form an interlinked triad of national resilience. Break one, and the others will quickly falter.

From Russia's weaponisation of gas exports in Europe, to cyberattacks targeting U.S. pipelines, and the energy fragility revealed by extreme weather events worldwide, the message is clear: sovereignty starts with securing your critical infrastructure.

"Energy security isn't just a utility issue anymore," says Alastair Williamson, CEO of Wyld Networks. "It's a sovereignty issue. And the key to solving it lies in real-time data and global reach — something IoT makes possible."

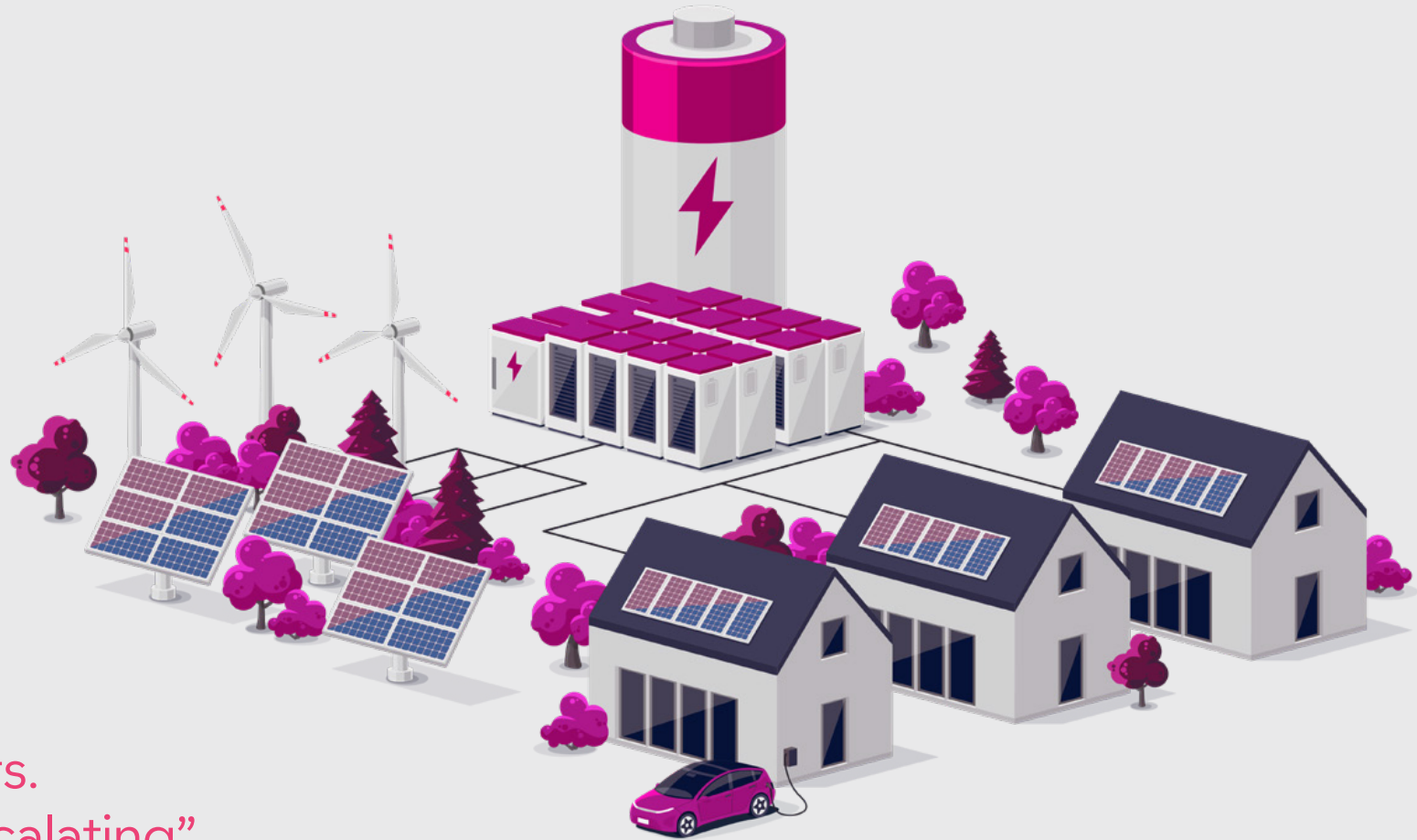
The Challenge: Fragile Systems in an Unstable World

Even the most technologically advanced nations face vulnerabilities. The Colonial Pipeline ransomware attack in 2021 paralysed fuel delivery across the U.S. East Coast — not because of a physical fault, but due to poor digital hygiene and a single point of failure. Likewise, Europe's energy crisis following the invasion of Ukraine exposed the strategic peril of import dependency.

Food systems are no more resilient. Agriculture today relies on vast, energy-hungry logistics networks and precision machinery. According to the FAO, modern food production consumes roughly 30% of global energy — making it highly vulnerable to energy disruption.

And military logistics? Fuel is as crucial as firepower. The U.S. Army calls energy its "tether to the fight" — an apt phrase for how deeply dependent defence operations are on stable and secure energy infrastructure.

These aren't theoretical threats. They're real, recurring, and escalating.



“These aren’t theoretical threats.
They’re real, recurring, and escalating”

we're empowering energy



PREDICT



OPTIMISE



DETECT

How Wyld Networks Is Reinventing Resilience with IoT

Wyld Networks, a UK-based pioneer in satellite-connected IoT solutions, offers a powerful answer: a lightweight, low-cost, and globally scalable way to monitor, predict, and secure vital infrastructure — even where traditional connectivity fails.

Here's how Wyld's technology supports energy security, and by extension, national stability.

1. Predict Failures Before They Happen — Even Off-Grid

Most failures don't occur without warning. But traditional infrastructure monitoring often leaves blind spots — especially in rural or remote environments. Wyld's sensors, connected via Low Earth Orbit (LEO) satellites, operate without reliance on cellular networks or power-hungry systems.

This enables 24/7 oversight of energy assets, from solar arrays in deserts to wind turbines offshore or pipelines crossing uninhabited regions.

"We're not just monitoring — we're anticipating," explains Williamson. "Our tech turns infrastructure from reactive to proactive. That's the difference between keeping the lights on and facing total blackout."

Wyld's technology has already been deployed in remote forestry, agriculture, and utilities — areas where traditional IoT simply can't reach. With satellites acting as the data backbone, Wyld helps secure critical systems anywhere on Earth.

2. Optimise Energy and Food Resources With Data

Efficiency isn't a luxury. In wartime or crisis, it's a necessity. Wyld's IoT solutions help governments and private operators maximise the value of their existing infrastructure — detecting energy leakage, tracking output variance, and ensuring optimal performance of every asset.

This matters not just for energy providers, but for farmers, water managers, and military planners.

A UN report found that improving resource efficiency across food and energy systems could reduce global demand by up to 25% without any change in yield or consumption — purely through smarter operations.

Wyld sensors embedded in irrigation systems, power lines, or cold-chain logistics platforms offer just that kind of intelligence.

"We've proven that a small investment in sensors leads to big savings in downtime, fuel, and maintenance," says Williamson. "In an age of scarcity, that's a massive advantage."

3. Detect Tampering and Sabotage Through Pattern Recognition

Security isn't just about performance. It's about integrity. Sabotage — whether cyber or physical — often hides in plain sight until it's too late. Wyld's distributed sensor networks log and learn from millions of data points, allowing systems to detect subtle anomalies.

A shift in pressure. A valve opening at an unusual time. A power fluctuation that doesn't match usage patterns. Each might be harmless alone — but together, they could signal a breach.

Using machine learning at the edge, Wyld's systems can flag suspicious behaviour patterns, triggering alerts before damage is done. In sensitive zones like border pipelines, nuclear facilities, or strategic grain reserves, this vigilance can make all the difference.

"Our tech turns infrastructure from reactive to proactive. That's the difference between keeping the lights on and facing total blackout"





Affordability, Agility, and Global Reach

Unlike heavy, infrastructure-intensive solutions, Wyld's platform is designed to be agile. It doesn't require expensive cell towers or fibre backbones. Its sensor-to-satellite architecture is cost-effective, easy to deploy, and scalable across sectors — from a single utility operator to a national defence force.

And with partnerships growing across Africa, South America, and Southeast Asia, Wyld is expanding its footprint into regions where energy independence is not just a goal — it's a survival imperative.

"We're building the infrastructure of resilience," Williamson concludes. "Wyld isn't a gadget company. We're part of a sovereign nation's toolkit for the future."

Final Thought: The Next Great Power Grid Is in Space

Energy, food, and military readiness are no longer siloed concerns. They're interdependent — and they're all underpinned by data. In a world where the next threat may come from a cyber-virus, a drone strike, or a drought, intelligence and infrastructure must work together.

Wyld Networks offers a way to do that — affordably, globally, and right now.

**“Wyld Networks
offers a way to
do that —
affordably, globally,
and right now”**



100%
security and sovereignty

“...these aren’t just support systems for a country’s security —
they’re the essential foundations of it”



THANKS FOR READING

We hope you have enjoyed this edition of PING.

Continue to subscribe for industry insights into global IoT challenges and how the team at **wyldNetworks** is driven to deliver powerful solutions to its customers.

info@wyldnetworks.com