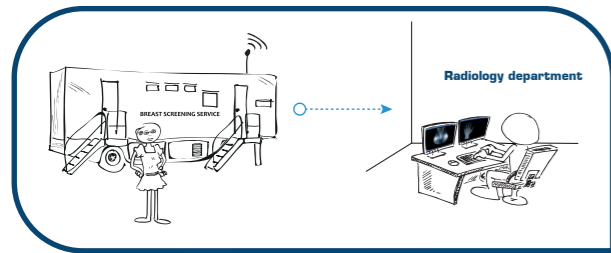




This is Anna!

Anna was recently diagnosed with breast cancer. Her life has been turned upside down. Her story illustrates how Sectra views the future of healthcare and how Sectra helps improve efficiency and quality of care.

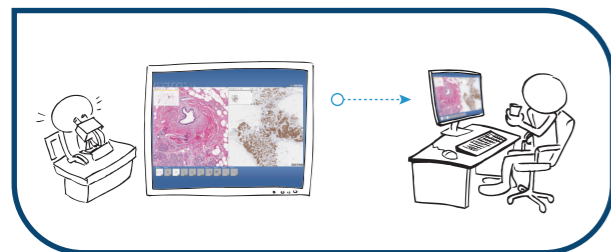
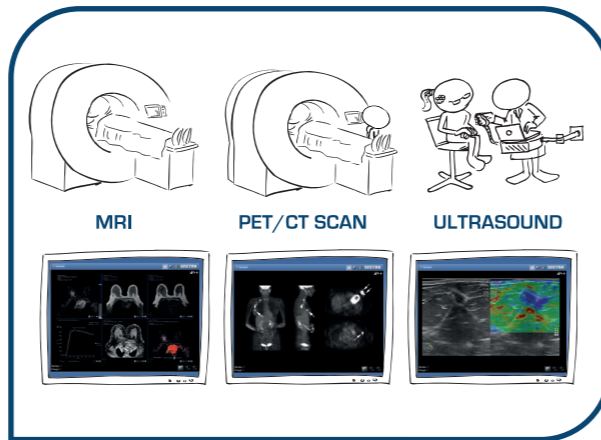


QUICK RESPONSES KEY IN REDUCING ANXIETY

Anna was called for breast screening to a mobile mammography bus close to her home. They found something suspicious. Anna was quickly recalled for further examinations and a biopsy. She was later diagnosed with breast cancer.

MEDICAL IMAGES PLAY AN ESSENTIAL ROLE IN THE CARE PROCESS

Anna has several imaging studies done to identify her type of cancer and to see if it has spread to other organs. Anna's image data will grow tremendously during the coming years of examinations and follow-ups. Efficient storage, display and sharing of these images is essential for her treatment. As is radiology's ability to navigate through patient history, to make a correct diagnosis based on the complete patient record and communicate their results to Anna's care team.



DIGITAL PATHOLOGY - AN ENABLER IN CANCER CARE

The pathological findings are another essential piece in the diagnostic process. These deliver the hard evidence of Anna's cancer type and stage which is decisive for her treatment plan. When working digitally, the pathologists can make efficient use of experts in other regions and it allows them to easily share the pathological report and images with all caregivers involved.

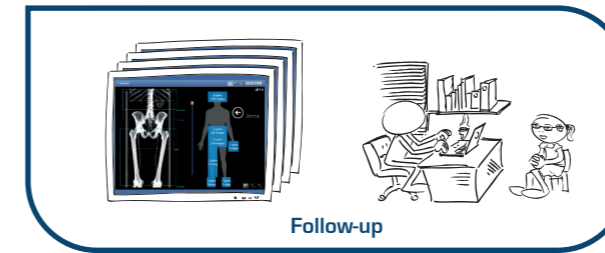
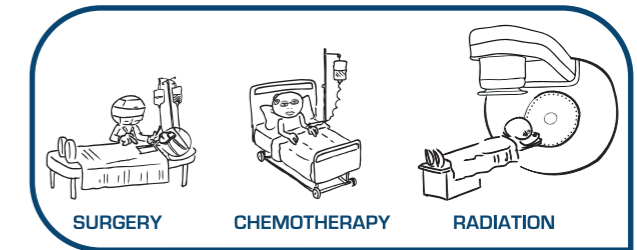
Anna's story continues on next page...



...continuation of Anna's story

QUICK AND EASY IMAGING OVERVIEW

It was decided that Anna will have a mastectomy, followed by chemotherapy and radiation therapy, and finally, reconstructive surgery. By collecting and structuring data from the various treatments, clinicians gain an instant overview of Anna's status. For example, in the case of possible recurrence or metastasis there is a clear overview of her disease process.



Follow-up

BETTER INFORMATION MEANS BETTER CARE

Structuring and displaying Anna's images and information in an integrated view ensures that clinicians are better informed. This not only increases their efficiency, it also helps to have better information transfer and discussion with Anna and her family about the progress of her cancer treatment.

We are happy to announce that Anna's disease is in remission. She is now a breast cancer survivor.



How Sectra supports patients like Anna

Sectra works toward a goal of truly patient-centered care - with an extra focus on cancer care. We support radiology in exceeding the expectations of referring physicians and their patients through:

- » **Reading efficiency and timely and actionable reports**
Sectra PACS is designed for high-production environments with stability and usability in focus. It offers world-leading functionality for breast imaging workflows and also features advanced visualization tools and functions supporting improved reading efficiency and the creation of timely and actionable reports.
- » **Consolidated patient overview**
Sectra's VNA solution provides a consolidated patient overview by capturing, storing and accessing virtually all images, video, audio and documents.
- » **Cross-enterprise workflows**
Sectra's cross-enterprise workflow solutions enable quick and secure sharing of studies for workload balancing and collaboration with other doctors and facilities.
- » **Integrated diagnostics and efficient MDT meetings**
Sectra's solution for digital pathology and radiology are built on the same platform. With a shared technical platform, images from both of the diagnostic specialties can be stored and displayed in a single system. This enables deeper cooperation between radiologists and pathologists and facilitates, for example, multidisciplinary team meetings, a step in so-called integrated diagnostics.
- » **Simplified dose management**
Sectra DoseTrack is a web-based, flexible, and easy-to-use tool to monitor patient radiation doses and ensure that they are kept as low as reasonably achievable.
- » **Early detection of osteoporosis**
Sectra OneScreen is an efficient online service for early detection of osteoporosis as part of mammography screening and cancer treatment follow-up.

SECTRA

Knowledge and passion