

Introducing Hardox[®] 500 Tuf: The new generation of Hardox[®] wear plate for tipper bodies, buckets and containers

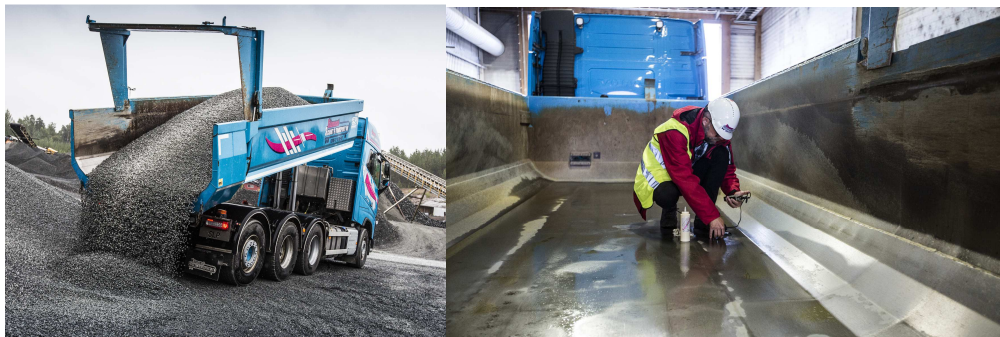
The new Hardox[®] 500 Tuf has exceptional strength, hardness and toughness in one and the same wear plate.

It combines the best properties from Hardox[®] 450 and Hardox[®] 500. The result is a wear plate with no real competition on the market.

Hardox[®] 500 Tuf is tough enough to perform as a structural material in heavy-duty tipper bodies and buckets. Its performance is also proven in cold climates and freezing conditions. Superior wear and dent resistance allow for increased service life and the ability to withstand heavy impact.

Typical working conditions include loading and unloading of heavy and sharp rocks in quarries and mines, handling large and heavy steel scrap, and in demolition when pieces of concrete with rebar are loaded or dropped into tippers.

Hardox[®] 500 Tuf has gone through rigorous pre-launch testing in real life applications.



The dump body in the pictures is made with Hardox[®] 500 Tuf in the bottom plate. It has transported over 40,000 metric tons of crushed rock during more than a year with very low wear. Measuring the thickness at the end section of the 6 mm bottom plate showed an average wear of only 5%.

Twice the service life possible

- 85-100% longer estimated service life compared to Hardox 400*
- Guaranteed impact energy of 27 J at -20°C

(cont.)

SSAB

SE- 613 80 Oxelösund
Sweden

T +46 155 25 40 00
F +46 155 25 40 73

contact@ssab.com

www.ssab.com

- Narrow Brinell hardness window of 475-505 HBW
- Highly dent and crack resistant when hit by sharp and heavy objects

*SSAB's WearCalc and TippCalc calculations based on sliding wear with granite

For more information about Hardox[®] 500 Tuf please contact:

Ursula Egenhofer

Brand Manager Hardox[®] wear plate, SSAB Special Steels, ursula.egenhofer@ssab.com

Phone: +1 412 203-1620

Mobile: +1 412 680-0080

SSAB is a Nordic and US-based steel company. SSAB offers value added products and services developed in close cooperation with its customers to create a stronger, lighter and more sustainable world. SSAB has employees in over 50 countries. SSAB has production facilities in Sweden, Finland and the US. SSAB is listed on Nasdaq Stockholm and has a secondary listing on Nasdaq Helsinki. www.ssab.com.

Join Hardox[®] wear plate also on social media: [Facebook](#), [Instagram](#), [LinkedIn](#) and [YouTube](#).