



Press information May 15, 2015

BARRIERS – CONTEMPORARY SOUTH AFRICA. INAUGURATION AT WANÅS KONST MAY 17, 2015.

Follow the exhibition in the sculpture park with new images of the works and installations. Meet the contemporary South Africa in an exhibition that brings together six artists from one of the new hot spots of the globalized art scene. Borders emerge and vanish, and barriers are constructed that separate us from each other. With new and especially commissioned works in the Sculpture Park and the Art Gallery as well as a suit of recent films, several of the artists in *Barriers* work with representations of the human body.

***Barriers – Contemporary South Africa*, with Igshaan Adams, Kudzanai Chiurai, Hannelie Coetzee, Nandipha Mntambo, Mary Sibande and James Webb. Opening Sunday May 17, 2015. Inauguration at 1pm by Stefan Helgesson, professor of literature, Stockholm University. The artists will be present.
Exhibition: May 17 – November 1, 2015.**

Barriers – Contemporary South Africa

Igshaan Adams, Kudzanai Chiurai, Hannelie Coetzee, Nandipha Mntambo, Mary Sibande, James Webb. Additional exhibitions and programs 2015: *The Children's Book – Jenny Granlund & Johanna Koljonen*, and *Revisit – Past Performance* that explores the history of performance at Wanås and includes a performance lecture with Robert Wilson, and a collaboration with Konstantverkscentrum with contemporary craft.

Exhibition: May 17 – November 1, 2015.

Publication WK#15

The 2015 exhibition season is accompanied by a magazine. With artists' presentations, and essays by Nthikeng Mohlele and Elisabeth Millqvist. In Swedish and English.

Press contact

Sofia Bertilsson, +46 (0)733 86 68 20, press@wanaskonst.se

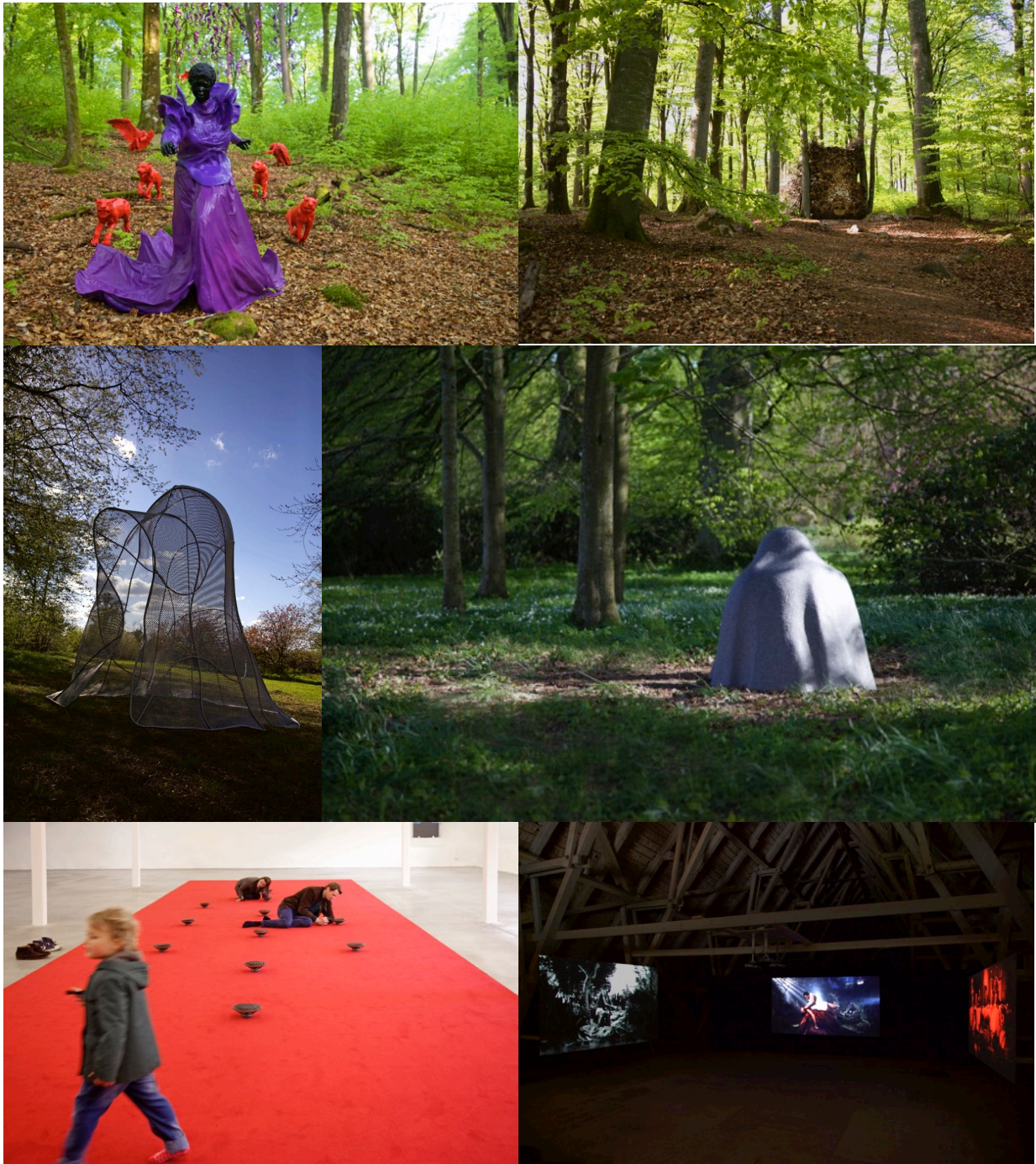
Wanås Konst/The Wanås Foundation

Wanås, SE-289 90 Knislinge, Sweden

www.wanaskonst.se

Wanås is a place in the world where art, nature and history meet. Since 1987 exhibitions of Swedish and international contemporary art have taken place, with a focus on site-specific installations. Today the sculpture park holds more than 50 permanent works, created specifically for Wanås Konst by artists such as Ann Hamilton, Jenny Holzer, Yoko Ono and Ann-Sofi Sidén et al. Wanås consist of a medieval castle, an organic farm, a scenic sculpture park and an art gallery. Art is also installed in stable and barn buildings from the 18th and 19th centuries.

Wanås Konst is run by The Wanås Foundation. A non-profit foundation in Östra Göinge municipality, in the South of Sweden, only 1.5 h from Copenhagen, Denmark. Founding Director Marika Wachtmeister initiated the art projects at Wanås in 1987. Since 2011 the foundation is led by Elisabeth Millqvist and Mattias Givell. Read more at www.wanaskonst.se



Images: (1) Mary Sibande, *Let slip the dogs of war*, 2015. Photo: Mattias Givell/Wanås Konst. (2) Hannelie Coetzee *Ou sog tussen bome/ Gamla sugga mellan träden*, 2015. Photo: Mattias Givell/Wanås Konst. (3) Nandipha Mntambo, *Enticed Contemplation*, 2015. Photo: Mattias Givell/Wanås Konst. (4) Igshaan Adams, *I am You*, 2015. Photo: Mattias Givell (5) *Prayer (Malmö)*, 2015. (6) Kudzanai Chiurai, *installationsbild Wanås Konst*. Photo: Mattias Givell/Wanås Konst.