

Press Release

Jul 19, 2013 | ID: 124271

Model Overview: 2014 Volvo XC70

Model Overview: 2014 Volvo XC70

XC70 3.2: \$34,500
XC70 3.2 Premier: \$37,900
XC70 3.2 Premier Plus: \$39,450
XC70 3.2 Platinum: \$41,950
XC70 T6 AWD: \$40,950
XC70 T6 AWD Premier Plus: \$42,950
XC70 T6 AWD Platinum: \$45,650
Destination: \$915

The XC70 artfully combines the superb driving characteristics of a Volvo luxury car with the cargo carrying versatility of a premium wagon and trail-ready ruggedness of an SUV. It's a successful formula that Volvo has been improving since launching the first "Cross Country" in 1997. For 2014, the XC70 is ready to embark on a new era of adventures with freshened styling, advancements in technology, feature upgrades and an expanded list of available options.

Dynamic Styling Enhancements

Volvo brings the XC70 into sharper focus with redesigned front and rear styling including a new grille with a bolder, wider proportion, a larger Iron mark, a wider lower intake stretching the visual width of the car, new bumpers projecting an enhanced horizontal stance, new headlights and LED daytime running lights, updated front and rear matte silver décor trim, rear skid plate décor, new taillight design plus standard 17-inch Valder alloy wheels for XC70 3.2 models. Bright Silver metallic and Crystal White pearl are new color choices.

XC70 customers can continue to select a drivetrain that meets their needs. The XC70 3.2 models are equipped with standard front-wheel drive while Volvo's signature All-Wheel Drive with Instant Traction is available as an option on any 3.2 trim level, providing the best possible grip in all situations. The sporty XC70 T6 features standard AWD. Hill Descent Control (HDC), included on XC70s with AWD, uses the vehicle's brakes and engine torque to crawl in bottom gear on steep downhill slopes. Changes to the XC70's luxurious interior include redesigned instrument clusters for all models. A new analog cluster is standard on the 3.2 Premier trim level. All other 3.2 and T6 trims gain a new adaptive digital display. This electronic Thin Film Transistor (TFT) design gives drivers the convenience of selecting from three different themes:

- Elegance has a traditional appearance with a large circular speedometer flanked by secondary displays.
- Eco features green background illumination with an Eco meter displayed on the left. Current and accumulated fuel consumption figures are displayed and the driver is rewarded with a green "E" light when eco-driving is optimal.
- Performance has red background illumination for a sporty atmosphere. A tachometer replaces the speedometer while vehicle speed is shown digitally. The right display includes a power meter gauge that informs the driver how much power is available and how much is being used at any given moment.

Volvo's trim level strategy gives customers opportunities to select vehicles equipped exactly the way they desire. XC70 3.2 is offered in base, Premier, Premier Plus and Platinum trims while the T6 AWD comes in base, Premier Plus and Platinum. In addition to the new adaptive digital display, 3.2 Premier gains an auto-dimming rearview mirror. Premier Plus now includes a quick-fold front passenger seat and rear park assist camera while Platinum adds accent lighting. The Platinum trim level continues to feature the Volvo Premium Sound System with Dolby® Pro Logic® II

Surround Sound, 12 premium speakers and 650 watts plus a Navigation System with Voice Control real time traffic, map care plus a rear park assist camera.

New features added to the optional Climate Package, available on all models, include a heated windshield, 3-spoke leather steering wheel with décor inlay and heated steering wheel. This package also offers heated front and rear seats, heated windshield washer nozzles and Interior Air Quality System (IAQS). All XC70s can be further enhanced with the Technology Package. Cyclist Detection has been added to the Pedestrian Detection with Full Auto Brake function. Active High Beam automatically switches the headlights to low beam when opposite traffic is detected. Road Sign Information (RSI) displays traffic speed signs for the driver on the instrument cluster based on the Forward Looking Camera (FLC). The package also includes Adaptive Cruise Control (ACC) with Queue Assist, Collision Warning with Full Auto Brake (CWAB), Distance Alert (DA), Driver Alert Control (DAC) and Lane Departure Warning (LDW).

New stand-alone options include 18-inch Zephyrus alloy wheels (standard on T6), active dual xenon headlights with washers, heated front seats, accessory prep cable and front and rear park assist. Standard XC70 safety systems include City Safety, a world-first technology that made its debut on the Volvo XC60. City Safety is a driver support system aimed at preventing or mitigating collisions with a vehicle ahead occurring at speeds of 19 mph or less. It utilizes a closing velocity sensor to help determine whether a collision is likely. Depending on the closing speed, City Safety will either pre-charge the brakes or automatically brake the XC70 to help avoid a rear-end collision or lessen its impact. Advanced powerplant choices for XC70 include a 3.2-liter naturally aspirated 6-cylinder engine that delivers 240 horsepower with ULEV II emissions rating or 230 horsepower with PZEV (Partial Zero Emissions Vehicle) rating. The XC70 T6 AWD 3.0-liter turbocharged six-cylinder engine develops 300 horsepower and 325 lb.-ft. of torque. Maximum torque is on tap from just 2,100 rpm and remains available all the way up the rev range, resulting in quick acceleration and smooth drivability.

A six-speed Geartronic transmission that lets the driver select fully automatic operation or shift manually when desired is standard on all XC70s. A new gearshift knob with piano black background includes illuminated symbols for increased convenience. T6 AWD models include a sport mode to enhance the sporty driving character. When this mode is selected, new Advanced Quick Shift with revised software provides even quicker gear changes for improved acceleration. Gear changes are faster by as much as 50 percent between first and second, and as much as 30 percent on gear changes two through six. Zero to 60 mph acceleration improves 0.4 seconds from 6.9 to 6.5 seconds. **Scandinavian Design, People-focused Functionality** Introduced on the XC70, a height-adjustable integrated booster cushion, optional on all trim levels, teams with an extended inflatable curtain. This combination provides the industry's best passenger safety system for children in the rear seat. A strong side structure uses high-tensile steel of different grades to optimize side-impact protection. The XC70's versatile luggage compartment floor is equipped with aluminum rails and movable storage points to secure the load. Side panels also have built-in load anchorage eyelets to keep luggage securely in place. In addition, they can be supplemented with multifunctional rails for a variety of hooks, load-anchoring nets, cargo space dividers and other load related accessories.

New Sensus Connected Touch, available as an accessory, connects the car to the Internet and enables drivers and passengers to use various embedded applications that will enhance the driving experience - all through a touchscreen solution. The user has access to full Internet browsing (except when driving), Internet music streaming and Internet radio, Google maps, integrated navigation and an app store for new function upgrades.

Keywords:

Press Releases, 2014, XC70 (2008-2016)

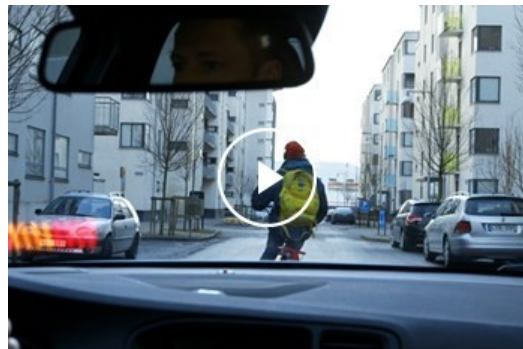
Descriptions and facts in this press material relate to Volvo Cars' international car range. Described features might be optional. Vehicle specifications may vary from one country to another and may be altered without prior notification.

Related Images



[More Images >](#)

Related Videos



[More Videos >](#)

media.volvocars.com >

volvocars.com >

Copyright © 2025 Volvo Car Corporation (or its affiliates or licensors).