

## Press Release

Sep 08, 2009 | ID: 20461

# THE NEW VOLVO C30 SPORTSCOUBE

- New front and rear design
- Introduction of the new Sports chassis
- New accessory styling kit
- Extensive range of options, bold colours and accessories

Volvo Car UK has announced first details of the new Volvo C30 SportsCoupe. Offering a radical new frontal and rear appearance and available with an all-new Sports chassis, the new C30 looks set to capitalise on the success of its predecessor. The new Volvo C30 will be unveiled to the world at the Frankfurt Motor Show in September and will go into production this November.

### Major exterior changes

The front of the Volvo C30 has been redesigned giving the car a radical new appearance. Body panel changes, including the wings and bonnet, create a distinctive personality whilst closely aligning it to the S60 Concept and recently announced new C70.

"The front of the Volvo C30 has become more dramatic and expressive. The angled lines of the front bumper together with the new headlamps, which are drawn offset and up, reinforce the impression of speed and sportiness," says Fedde Talsma, Exterior Chief Designer at Volvo Cars.

In the grille sits the new, larger iron mark, as seen in the rest of the Volvo range. The air intake has also been enlarged and resembles the intake in the XC60. The grille also has a new honeycomb pattern, unique to the C30.

Although the biggest design changes have taken place at the front, the rear also sports a similar range of updates, including a new colour-coded rear valance that is available in body colour or, to add a dramatic twist, in a contrasting colour.

Other new exterior features include the introduction of a vibrant Orange Flame Metallic colour, visible exhaust tailpipes in the T5 and D5 models, two new wheel options, including a striking white wheel alternative and the choice of five different colours on the lower trim from the new C30 Contrast Colour Collection, such as Blackcurrant, Java and Shadow Blue.

### New expressive accessory styling kit

A new accessory styling kit has been introduced to give the Volvo C30 even more sporting attitude. The kit includes foglamp décor, a front skidplate, side scuff plates and a rear skidplate with an aluminium look. For D5 and T5 variants, two 90 mm tail pipes in polished stainless steel are added to highlight the powerful engine.

### Matching interior updates

The new Volvo C30 also offers a range of new interior options. There is now an all-new colour combination, Espresso/Blond, consisting of a dark brown upper section and a blond, fresh shade on the lower door sides. The blond tone is a grey/beige colour and is an expression of Volvo's strong Scandinavian design tradition. The Espresso/Blond interior gives customers the opportunity to specify the new, bright accent colours which include orange, green and blue in the fabrics, as well as a new Cranberry colour for leather upholstery.

"We want to give customers the opportunity to decide for themselves what their car looks like. The new C30 gives them a range of fresh, modern style cues in terms of colour and fabric to choose

between," explains Maria Uggla, Program Chief Designer Colour & Trim at Volvo Cars.

### New Sport chassis

To compliment the Volvo C30's new dynamic style, an optional Sports chassis will be available which gives the C30 a significantly sharper ride. The introduction of the Sports chassis means the car is lowered by 10 millimetres, resulting in a lower centre of gravity to enhance the driving characteristics. The steering is more precise owing to the installation of stiffer bushings. The steering ratio is lower, giving a 10 percent faster response to steering wheel input. Spring stiffness has been increased by 30 percent to deliver a more dynamic ride. The dampers too are stiffer and are designed to build up pressure more quickly. The roll stabilizers are also stiffer to reduce any leaning tendency when cornering. The new sport chassis is available as an option in all C30 variants except with the 1.6D DRiVe with Start/Stop. (More information on the new Sport chassis to follow).

### Drivelines

The new Volvo C30 will be available with a wide range of drivelines, including the new 1.6D DRiVe with Start/Stop which offers impressively low fuel consumption. The figures below are for versions with a manual gearbox running in the combined cycle.

Diesel engines Power output		Fuel consumption CO <sub>2</sub>	
D5	180 PS/400 Nm	45.6 mpg	164 g/km
2.0D	136 PS/320 Nm	49.6 mpg	151 g/km
1.6D DRiVe	109 PS/240 Nm	62.8 mpg	119 g/km
1.6D DRiVe start/stop	109 PS/240 Nm	74.3 mpg	99 g/km

Petrol engines Power output		Fuel consumption CO <sub>2</sub>	
T5	230 PS/320 Nm	32.5 mpg	203 g/km
2.0	145 PS/185 Nm	38.2 mpg	177 g/km
1.6	100 PS/150 Nm	40.4 mpg	167 g/km

### Further pricing and specification details

Full details, including prices and specification, will be released closer to the on-sale date. First vehicles are expected to be in showrooms and delivered to customers in early 2010.

Ends

### Keywords:

C30, Press Releases, 2010

---

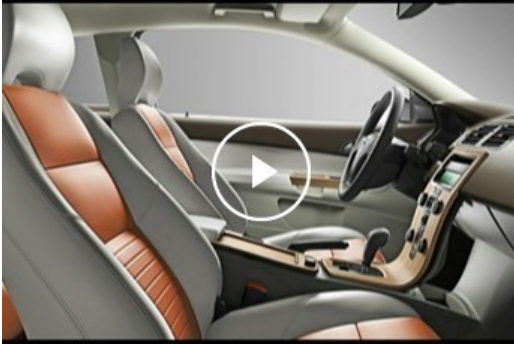
Descriptions and facts in this press material relate to Volvo Car UK's car range. Described features might be optional. All information is correct at time of going to press and may be altered without prior notification.

## Related Images



[More Images >](#)

## Related Videos



[More Videos >](#)

[media.volvocars.com](http://media.volvocars.com) >

[volvocars.com](http://volvocars.com) >

Copyright © 2025 Volvo Car Corporation (or its affiliates or licensors).