

Press Release

Apr 28, 2015 | ID: 161460

Volvo V40 - model year 2016

As of model year 2016 all versions of the Volvo V40 are equipped with Drive-E powertrains – offering a world-class blend of drivability and low CO₂ emissions. The CO₂ emissions of the 120 hp Volvo V40 D2 with manual gearbox is 94 g/km.

EXTERIOR

Low and wide front design

The classic V-shaped bonnet is further enhanced by bold, expressive lines. The high-gloss grille is low and wide in order to create a sporty, close-to-the-ground feel. The lower opening is surrounded at the corners by sculpted bodywork, stretching from one wheel arch to the other. The sculptured corners not only add character, they also direct the airflow to improve aerodynamics. Daytime Running Lights are set into the lower corners of the front end, sweeping upward from direct front view. The "blade design" of the front headlights creates an attractive light pattern in the dark.

Wide shoulder and dynamic profile

The wide shoulder line stretches back from the headlamp with a sharp line to echo the rising beltline. As it reaches the end of the rear door it sweeps up into an integrated "hook", inherited from the legendary P1800. The highlight continues rearward into a very full powerful section that resolves into the tail lamps.

The roof silhouette contributes to the impression of a car leaning forward - eager to take off. The car is finished with a dynamically sculpted rear to further emphasise its width and muscular stance, with the lower area "blacked out" to achieve an athletic, low and wide look.

The V40 portfolio includes two new exterior colours (Magic Blue and Onyx Black).

Panorama glass roof - an enlightening experience

The Volvo V40 is available with a fixed panorama glass roof that stretches from the front windscreen to the backrest of the rear seats.

INTERIOR

Designed around people

The interior of the Volvo V40 is designed with a strong emphasis on ergonomics, comfort and an engaging driving experience. The wide instrument panel, together with the fluidity of the door design, creates a spacious, "large-car" feeling. The interior is designed to offer the driver and passengers a spacious and relaxing atmosphere with a true Scandinavian flavour.

Adaptive digital display

The V40 is available with a fully graphic instrument cluster that expresses emotional functionality, always displaying the most important information in any given situation right in front of the driver. The driver can choose between three graphic themes: Elegance, Eco and Performance.

Sensus Connect

The Digital Display theme colours are also echoed in the connected infotainment system Sensus Connect. It features a refreshed user interface with a number of innovative functions offering customers a fully connected experience.

The cloud-based services allow the driver to find and pay for parking from the car, discover new restaurants at the destination, stream favourite music seamlessly and much more. The driver can also have text messages read out aloud without taking hands off the wheel.

The app Connected Service Booking is only the first step in making the dealer workshop fully integrated into the digital eco-system. The car will not only tell the driver when it's time to visit the garage but also suggest an appointment at the Volvo dealership.

The Bluetooth mobile phone service allows hands-free phone conversations as well as music streaming from a preferred Bluetooth enabled portable music player.

Sensus - always on call

One of the most widely appreciated features related to the Sensus offer, Volvo On Call, allows Volvo drivers to communicate directly with their car via a smartphone application to lock, unlock, check fuel levels, locate and check mileage on the car.

For 2015 Volvo On Call will be updated, adding a completely new graphical user interface, enhanced send to car capabilities, diagnostics views and smartwatch support for Android Wear, Apple Watch, iPad support and also voice control via Cortana for Windows Phone.

Premium Sound system

The Sensus family also includes a top-of-the-line Premium Sound system with a 5x130W amplifier with the next-generation sound enhancement software Dirac Live and 10 loudspeakers, including a long-throw woofer for enhanced bass, soft dome tweeters for soft highs and large mid-range centre and door speakers.

With the Premium Sound system by Harman Kardon the driver can enjoy an immersive sound stage with improved bass performance, while being able to turn up the volume with full audio clarity.

R-DESIGN

For the performance-minded

The V40 R-Design is designed around the performance-minded individual with a passion for those things that add extra spice to life. The meticulous attention to detail covers the expressive design as well as the agile, precise performance.

The unique R-Design front features a silk-metal framed high-gloss grille. The sporty stance is further enhanced with an ironstone diffuser, silk-metal finished details and twin exhaust tailpipes. The five-spoke diamond-cut wheels (17" and 18") complete the stylish, dynamic look.

New generation R-Design interior

Inside, the new generation R-Design seats and interior details emphasize the distinctive Scandinavian design aura of the all-new V40. R-Design appeals especially to customers that love active driving and a personal, expressive design.

New exterior colours for R-Design

Three new exterior colours have been added to the R-Design palette this year. They include Crystal White, Power Blue and Onyx Black, providing an enhanced opportunity for personal expression.

CHASSIS & POWER TRAINS

Dynamic chassis standard

The Volvo V40 has different chassis setups:

The Dynamic chassis is standard. The rigid body and low centre of gravity promote an alert, quick-responding character that focuses on the driving experience, yet without compromising ride comfort.

The optional Sport chassis is lowered 10 mm (15 mm in T5 version) compared with the Dynamic chassis. Springs and shock absorbers have a firmer setting, resulting in responsive driving pleasure with full control.

Steering with precise response

The steering column's thick tubing and stiff insulator increase torsional rigidity. This also

contributes to the enhanced feeling of direct contact with the wheels and the road. The Electrical Power Assist Steering (EPAS) uses an electrical motor to support the steering rack and the driver can choose between three levels of power assistance.

Drive-E powertrains

The V40 can be equipped with a full range of engines from the four-cylinder Drive-E powertrain family. To deliver the desired responsive, smooth and fuel-efficient drivability, the Drive-E engines are teamed either with Volvo Cars' new eight-speed automatic gearbox, six-speed automatic gearbox or a six-speed manual tuned for improved fuel economy. Versions with the automatic gearbox have paddles on the steering wheel for manual gear shifting when desired.

Eager petrol engines

The four-cylinder Drive-E petrol turbo T5 has 245 hp and 350 Nm of torque. Fuel consumption in a Volvo V40 with the 8-speed automatic is 47.9mpg (137 g/km) (EU Combined).

The T3 has 152hp and maximum torque of 250 Nm, while the T2 has 122 hp and 220 Nm of torque. Fuel consumption with the manual gearbox is 51.4mpg (127 g/km) for either engine.

Diesel with ground-breaking i-Art technology

The D4 turbo diesel comes with 190 hp and 400 Nm of torque. Fuel consumption in a V40 with a manual gearbox is up to 74.3mpg, which corresponds to CO₂ emissions of 99 g/km.

The engine features world-first i-ART technology with pressure feedback from each fuel injector instead of using a traditional single pressure sensor in the common rail. Each injector has an intelligent chip on top of it that monitors injection pressure. Using this information, the self-adapting i-ART system makes sure that the ideal amount of fuel is injected during each combustion cycle.

The combination of injection pressure at 2,500 bar and i-ART technology gives the customer an engine with high performance, improved fuel economy and considerably lower emissions.

The diesel also features refinements such as a state-of-the-art twin-turbo, reduced friction and a smart valve solution on the cooling system for a more rapid heat-up phase after a cold start.

D2 version with CO₂ emissions of 94 g/km

In addition there is the D3 producing 150 hp and 320 Nm of torque, while the new Drive-E D2 has 120 hp and 280 Nm. The V40 D2 with manual gearbox comes with CO₂ emissions as low as 94 g/km - corresponding to fuel consumption of 78.5mpg.

SAFETY & SUPPORT

Park Assist Pilot - making parallel parking easy

The Park Assist Pilot makes parallel parking easy and precise by taking over and operating the steering wheel while the driver handles the gearbox and controls the car's speed.

Lane Keeping Aid - active help to stay on course

Lane Keeping Aid helps the driver stay in the lane. This feature applies extra steering torque to the steering column when the car gets close to a lane marking and is about to leave the lane. The system is active at speeds between 40mph and 124mph.

Blind Spot Information System - for better visibility

The V40 offers the radar-based Blind Spot Information System (BLIS). The technology can monitor and alert the driver to rapidly approaching vehicles up to 70 m behind the car. Of course it still informs the driver about vehicles in the blind spots on both sides.

Cross Traffic Alert - covering your back

Cross Traffic Alert uses the radar sensors at the rear end of the car to alert the driver to crossing traffic from the sides when reversing out of a parking space. This is especially helpful in tight and crowded areas where the side view might be limited due to infrastructure, vegetation or other parked cars.

Road Sign Information - an extra "eye" on the traffic environment

Road Sign Information supports the driver by displaying road signs in the instrument display. Road Sign Information can be combined with the Speed Alert function, which provides the driver with a visual warning in the speedometer if the speed limit is exceeded.

Active High Beam - more relaxed driving in the dark

The Active High Beam technology in the Volvo V40 helps the driver utilise high beam more efficiently. It offers automatic switching between high and low beam at the right moment.

Adaptive Cruise Control & Distance Alert - keeping the distance

The V40 can be equipped with Adaptive Cruise Control (ACC), which promotes comfortable driving by using radar to automatically maintain a set time gap to the car in front. The Queue Assist function on cars with automatic gearbox maintains the set gap all the way down to standstill.

Pedestrian and Cyclist Detection technology

New advanced software, including more rapid vision processing made it possible to extend Volvo Cars' detection and auto brake technology to cover certain cyclist situations as well.

The Pedestrian and Cyclist Detection with full auto brake is equipped with an advanced sensor system that scans the area ahead. If a cyclist heading in the same direction as the car suddenly swerves out in front of the car as it approaches from behind and collision is imminent, there is an instant warning and full braking power is applied.

The technology also detects if a pedestrian steps out into the road in front of the car. If the driver does not respond in time, the car can warn and automatically activate the brakes. The V40 can also detect, alert and automatically brake if the car risks colliding with another vehicle in front.

Pedestrian Airbag Technology - a world first

In order to mitigate the consequences if a collision with a pedestrian is unavoidable, the Volvo V40 is available with a Pedestrian Airbag, a world first. Sensors in the front bumper register the physical contact between the car and the pedestrian. The rear end of the bonnet is released and at the same time elevated by the deploying airbag.

City Safety - active up to 31mph

The V40 features a City Safety system that is active at speeds up to 31mph. The car automatically brakes if the driver fails to react in time when the vehicle in front slows down or stops - or if the car is approaching a stationary vehicle too fast.

Driver Alert Control - detecting and warning tired drivers

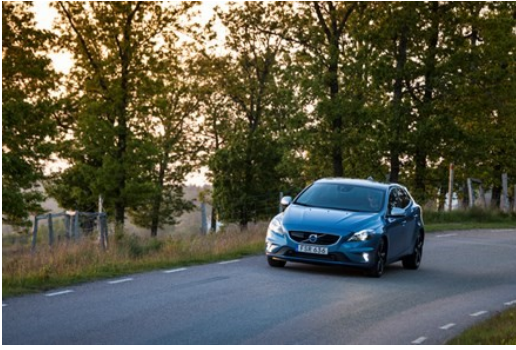
Driver Alert Control is designed to detect and warn tired drivers. The system can also cover other situations where the driver is distracted. Sensors register the car's movements. The control unit stores the information and calculates whether the driver risks losing control of the vehicle.

Keywords:

V40, Press Releases, 2016

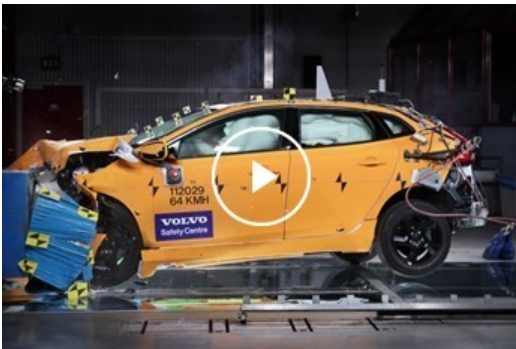
Descriptions and facts in this press material relate to Volvo Car UK's car range. Described features might be optional. All information is correct at time of going to press and may be altered without prior notification.

Related Images



[More Images >](#)

Related Videos



[More Videos >](#)

media.volvocars.com >

volvocars.com >

Copyright © 2025 Volvo Car Corporation (or its affiliates or licensors).