

## Communiqués

Jun 27, 2013 | ID: 49842

# VOLVO V40 (1995-2004)

### **VOLVO V40 (1995-2004)**

The V40 was the result of a joint-venture between Volvo Cars and Mitsubishi; the two companies built their own series of cars on a common technical platform side by side in the Dutch NedCar plant.

The Volvo V40 was mechanically identical to the S40 model, but was (in traditional Volvo style) been further developed into a compact estate car, offering the same comfort, safety and performance levels as the S40, but with the added flexibility obtained through an estate car body.

Like the S40, the V40 was available in a large number of versions, adapted to the individual requirements of the customer who enjoys Volvo characteristics in a compact car.

### **MODEL SPECIFICATIONS**

Model: V40

Produced: 423,491

Body: 5-door estate

Engine: 4-cylinder in-line DOHC 1,587 1,948 cc, and 4-cylinder in-line SOHC 1,870 cc turbo diesel

Transmission: 5-speed manual, 4- or 5-speed automatic.

Brakes: Hydraulic, disc brakes all round

Dimensions: Wheelbase 256 cm.

### Mots clés:

V40, Press Releases, V40 Gen I, Product News, 1995

---

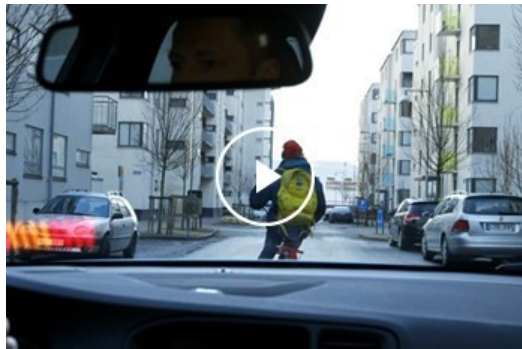
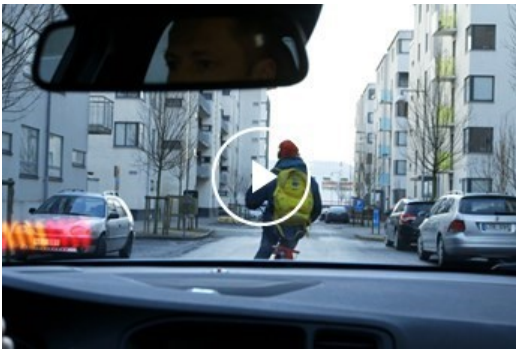
La description et les faits repris dans le matériel de presse concernant la gamme de voitures internationale de Volvo Cars. Les équipements peuvent être optionnels. Les spécifications peuvent varier en fonction du pays et peuvent être modifiées sans préavis.

## Images liées



[Plus de photos >](#)

## Vidéos liées



[Plus de vidéos >](#)

[media.volvocars.com >](https://media.volvocars.com)

[volvocars.com >](https://volvocars.com)

Copyright © 2025 Volvo Car Corporation (or its affiliates or licensors).