

## Press Release

Jun 26, 2013 | ID: 49776

### VOLVO PV4 (1927-1929)

Volvo's first saloon car, PV4, appeared in the summer of 1927 and an alternative 'Special' version was introduced the following year.

The bodywork of the PV4 was based on the Weymann principle, with an insulated wooden frame without wood-to-wood contact between the components and covered with artificial leather instead of steel. The seats could be converted into a comfortable bed for two people.

#### MODEL SPECIFICATIONS

Model: PV4

Variants: PV4 "A", PV4 "Special"

Produced: 694

Body: Saloon.

Engine: In-line, 4-cylinder with side valves; 1,944 cc; 75x110 mm; 28 bhp at 2,000 rpm.

Transmission: 3-speed, non-synchromesh

#### Keywords:

PV 4, Press Releases, 1927, Product News

---

Descriptions and facts in this press material relate to Volvo Cars' international car range. Described features might be optional. Vehicle specifications may vary from one country to another and may be altered without prior notification.

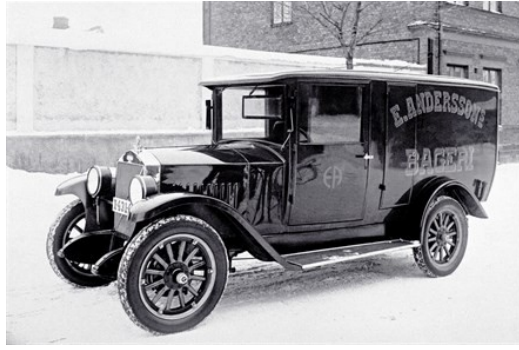
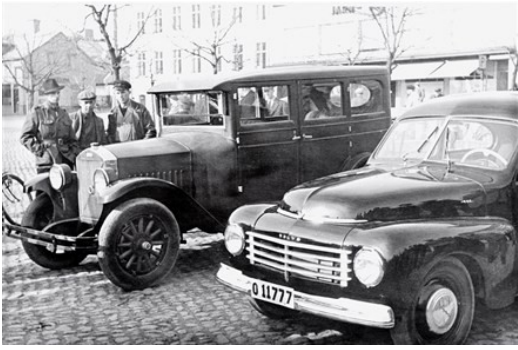
### Media Contacts

#### **Volvo Cars Media Relations**

Phone: +46 (0)31-59 65 25

media@volvocars.com

### Related Images



[More Images >](#)

[media.volvocars.com >](https://media.volvocars.com)

[volvocars.com >](https://volvocars.com)

Copyright © 2025 Volvo Car Corporation (or its affiliates or licensors).