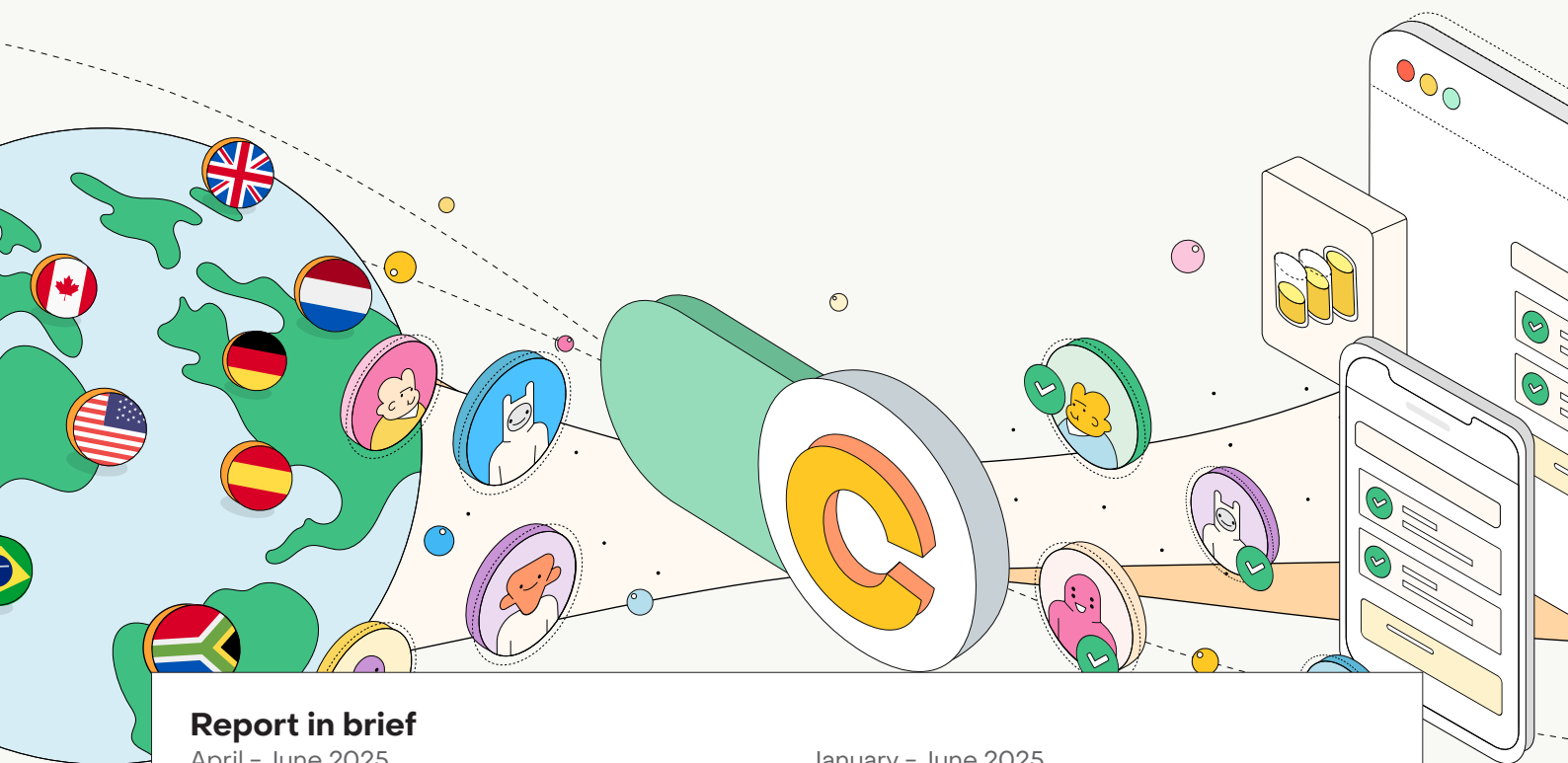


Checkin.com Group AB

Interim report

January – June 2025



Report in brief

April – June 2025
(Compared to previous year)

Net revenue decreased to KSEK 18,103 (20,385) which corresponds to a growth of -11 (-3)% compared to the same period 2024. At constant currencies the growth was -5 (-4)%. Compared to the first quarter of 2025 Net revenue growth amounted to -4 (-4)%.

Gross profit for the period amounted to KSEK 12,681 (15,312) with a margin of 70 (75)%.

EBITDA for the period amounted to KSEK 3,113 (2,661) with a margin of 17 (13)%.

Cash flow from operating activities amounted to KSEK 1,568 (2,217).

Net Revenue Retention LTM amounted to 82 (103)%.

Cash and cash equivalents amounted to KSEK 19,998 (35,304).

January – June 2025
(Compared to previous year)

Net revenue decreased to KSEK 36,929 (41,670) which corresponds to a growth of -11 (5)% compared to the same period 2024. At constant currencies the growth was -8 (4)%.

Gross profit for the period amounted to KSEK 25,856 (31,757) with a margin of 70 (76)%.

EBITDA for the period amounted to KSEK 5,429 (7,464) with a margin of 15 (18)%.

Cash flow from operating activities amounted to KSEK 5,713 (6,560).

Net Revenue Retention LTM amounted to 82 (103)%.

Cash and cash equivalents amounted to KSEK 19,998 (35,304).

CEO letter

When we close the first half of 2025 with our Q2 report we can confirm that the year has continued at roughly the same revenue levels as in Q1, while our EBITDA margin has improved. Revenue for the second quarter amounted to MSEK 18.1, with an EBITDA margin of 17%. This corresponds to a YoY revenue decline of 11%. However, it's worth noting that when adjusting for the lost revenues from our former customer RingCentral, which also carried fixed personnel costs at corresponding levels, revenue grew by 6%. Q2 2024 was the final quarter with revenue contributions from RingCentral, meaning that starting next quarter, YoY comparisons will offer a more accurate picture.

Compared to Q1 2025, we saw a slight decrease in revenue. As previously communicated, Q1 saw a strong start in the newly regulated Brazilian iGaming market, driven by a surge of new user activity. It's common for newly opened markets to perform strongly initially, followed by a temporary decline in momentum, something we experienced during Q2, with reduced traffic volumes. Additionally, increased tax pressure on both operators and suppliers has led to lower operator investments, which indirectly impacts our opportunities in the region.

As part of our efforts to achieve positive cash flow, we continue to streamline our organization to improve cost control, while simultaneously working to grow revenue in a sustainable manner. The intensified cost focus initiated in Q2 is now beginning to show in the numbers. This impact will strengthen further during Q3 and reach full effect in Q4.

In my previous CEO Letter, I mentioned new revenue streams and the strong initial traction for our latest biometric login product, FaceCheckin. We continue to see strong interest, particularly within the travel and aviation industries. Our expectations remain high for securing additional revenue in the travel segment, both from existing and new customers. While procurement and contract negotiation cycles remain long, it is encouraging to observe how the industry is moving faster from a technical perspective, especially in the adoption of facial recognition and biometric technologies.



This is, of course, highly favorable for Checkin.com. Our position in the industry is growing stronger through ongoing collaborations with major players like Ryanair and WestJet, and we are currently involved in multiple procurement processes with both airlines and other relevant actors in the space.

On the topic of new revenue streams, we went live during the quarter with an omnichannel launch in partnership with the Philippine-based Solaire Resort. We are seeing growing interest in our omnichannel offering, where we bridge the customer's digital and physical operations. Another large customer is expected to go live this fall.

With a market-leading platform and increasing global interest in our company, we remain focused on regaining our position as a profitable growth company. We look forward to an exciting second half of 2025.

Christian Karlsson

Christian Karlsson, acting CEO
Stockholm, August 21, 2025

Interim report January – June 2025

Summary of the second quarter and first six months of 2025

	Apr – Jun		Jan – Jun		Full year
	2025	2024	2025	2024	2024
Amount in KSEK					
Net revenue	18 103	20 385	36 929	41 670	77 477
Net revenue LTM	72 736	98 807	72 736	98 807	77 477
Gross profit	12 681	15 312	25 856	31 757	56 995
EBITDA	3 113	2 661	5 429	7 464	13 600
Operating profit (EBIT)	-4 872	-4 835	-11 167	-7 467	-17 399
Net result	-4 852	-4 950	-11 090	-7 689	-18 815
Cash flow from operating activities	1 568	2 217	5 713	6 560	13 748
Cash flow after investments	-3 456	-4 903	-4 410	-6 233	-9 272
Cash and cash equivalents	19 998	35 304	19 998	35 304	28 966
Key performance indicators					
Net revenue growth	-11%	-3%	-11%	5%	-20%
Net revenue growth, organic	-11%	-3%	-11%	5%	-20%
Net revenue growth, per share	-13%	-3%	-13%	5%	-21%
Net revenue retention LTM	82%	103%	82%	103%	58%
Gross margin	70%	75%	70%	76%	74%
EBITDA margin	17%	13%	15%	18%	18%
Operating margin	-27%	-24%	-30%	-18%	-22%
Equity ratio	87%	87%	87%	87%	88%
Financial target: Growth per share plus EBITDA margin	4%	10%	2%	22%	-3%
Data per share in SEK					
Earnings per share, before dilution	-0,16	-0,17	-0,37	-0,26	-0,64
Earnings per share, after dilution	-0,16	-0,17	-0,37	-0,26	-0,64

Definitions of key performance indicators can be found on p. 14.

Financial Target

That the combined measurement of revenue growth per share and EBITDA margin shall be maximized, with the ambition that the measurement shall exceed 80% on a yearly basis. For the 12-month period ending June 30, 2025, the actual outcome was -12% (-28% revenue growth per share and 16% EBITDA margin).

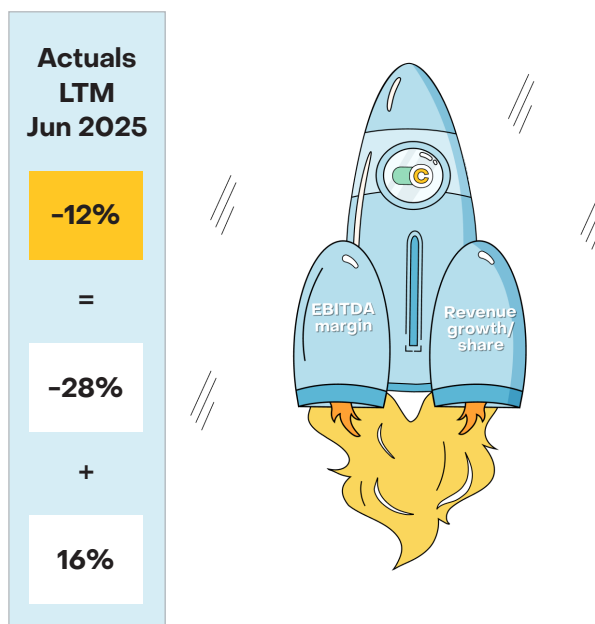
Net revenue growth, per share

Net revenue divided by the average number of shares during the period, compared to the same period previous year.

EBITDA margin

Earnings before interest, taxes, depreciation and amortization as a percentage of net revenues.

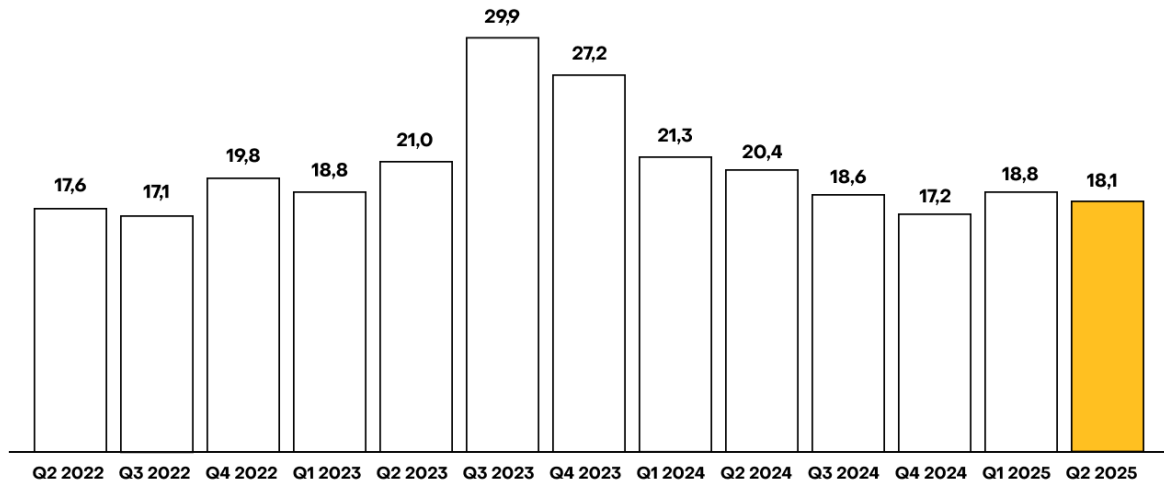
Based on the outcome during the first two quarters of the year, the board and management make the assessment that the ambition level of 80% combined revenue growth per share and EBITDA margin will not be achieved during the full year 2025.



Summary of the period

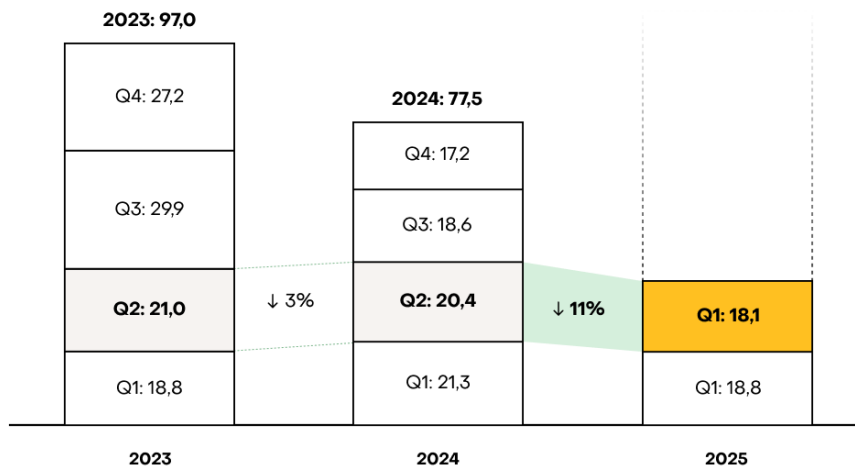
Quarterly Net Revenue

(MSEK)



Net Revenue per year and quarter

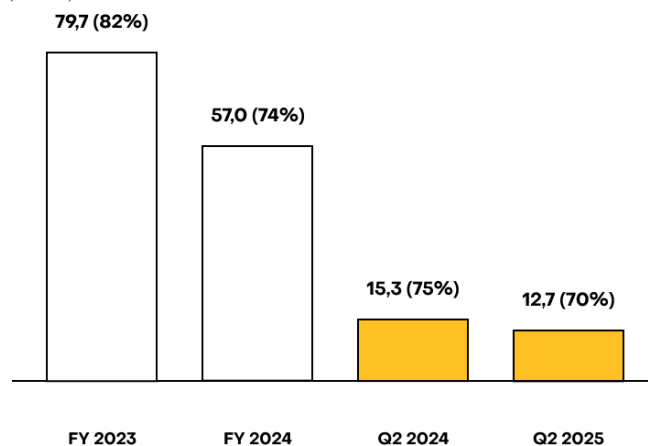
(MSEK)



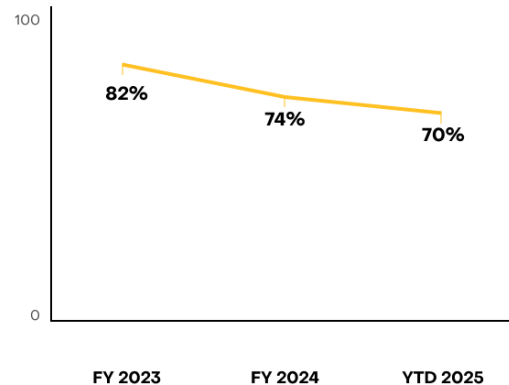
Gross profit and margin

Gross profit

(MSEK)



Gross margin

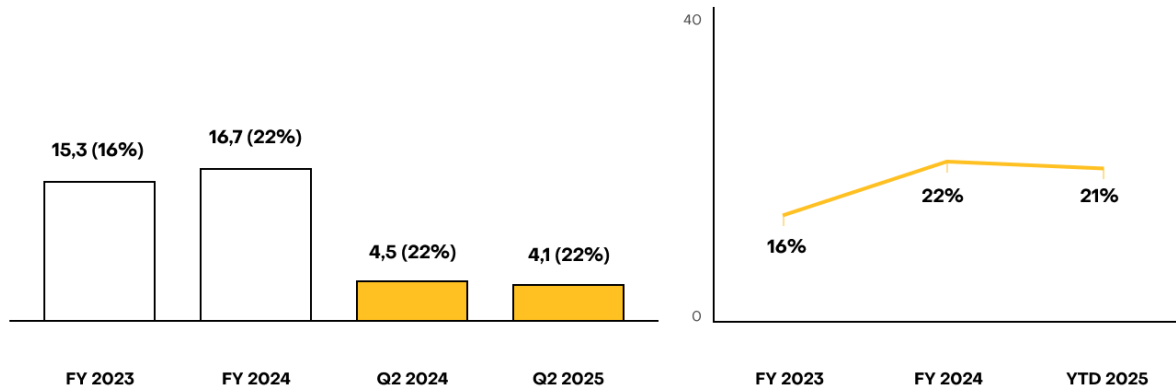


Summary of the period

Sales and marketing costs

Sales and marketing costs
(MSEK)

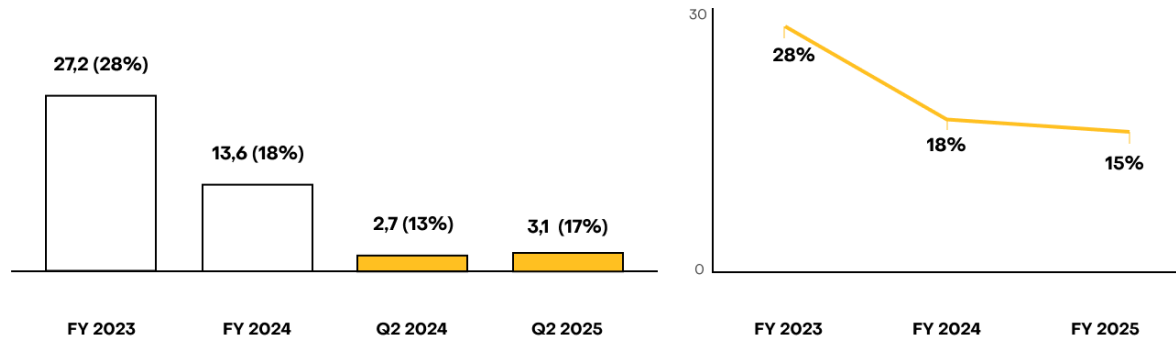
% of Net revenue



EBITDA

EBITDA
(MSEK)

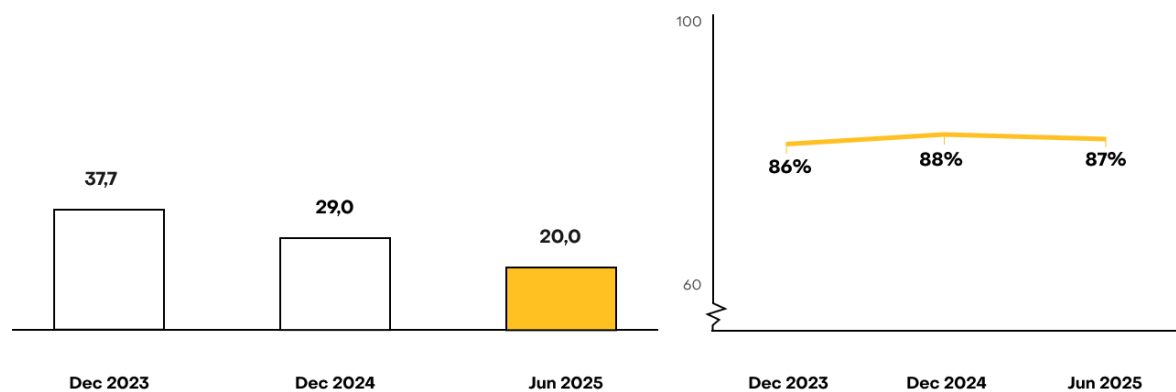
EBITDA margin



Cash and cash equivalents and Equity ratio

Cash and cash equivalents
(MSEK)

Equity ratio



Financial development

April – June 2025

Net revenue

Net revenue for the second quarter of 2025 amounted to KSEK 18,103 (20,385), which corresponds to a growth of -11 (-3)% compared to the previous year. At constant exchange rates in relation to the comparison period, the growth was -5 (-4)%. The decrease was driven by negative development from existing customers, primarily through the termination of the contract with RingCentral, which contributed with revenue of more than MSEK 3.3. Compared to the first quarter of 2025, net revenue growth amounted to -4 (-4)%, driven by a weaker development in the travel and iGaming segments.

Operating costs

During the quarter, direct costs for sold products and services amounted to KSEK -5,422 (-5,073), where the increase is explained by lower margins in general.

Other external costs amounted to KSEK -3,944 (-3,931). The Group's investments in sales and marketing amounted to KSEK -4,052 (-4,451), corresponding to 22 (22)% of net revenue during the period. Personnel costs decreased to KSEK -10,808 (-15,956), driven by the termination of the contract with RingCentral and cost saving initiatives. Other operating expenses amounted to KSEK -772 (-938).

Depreciation of tangible and intangible assets during the period amounted to KSEK -7,985 (-7,495). Depreciation attributable to the application of IFRS 16 on leases amounts to KSEK -166 (-696).

Income tax

The income tax of the Group for the period amounted to KSEK 161 (169) and refers to the change in deferred tax on identified intangible assets from the acquisition of GetID and Datacorp. The group's tax loss carry forwards are not capitalized on the balance sheet.

Result of the period

Gross profit for the period amounted to KSEK 12,681 (15,312) with a margin of 70 (75)%. Earnings before interest, tax, depreciation and amortization (EBITDA) amounted to KSEK 3,113 (2,661), corresponding to a margin of 17 (13)%. The decrease in EBITDA margin was primarily driven by lower revenues and a lower gross margin, but partly offset by lower operating costs. Operating profit amounted to KSEK -4,872 (-4,835) and the net result amounted to KSEK -4,852 (-4,950).

January – June 2025

Net revenue

Net revenue for the first six months of 2025 amounted to KSEK 36,929 (41,670), which corresponds to a growth of -11 (5)% compared to the previous year. At constant exchange rates in relation to the comparison period, the growth was -8 (4)%. The decrease was driven by negative development from existing customers, primarily through the termination of the contract with RingCentral, which contributed with revenue of more than MSEK 6.5 and a corresponding amount in personnel costs, during H1 2024.

Operating costs

During the period, direct costs for sold products and services amounted to KSEK -11,073 (-9,913), where the increase is explained by lower margins in general.

Other external costs amounted to KSEK -7,690 (-7,643). The Group's investments in sales and marketing amounted to KSEK -7,905 (-8,654), corresponding to 21 (21)% of net revenue during the period. Personnel costs decreased to KSEK -22,388 (-30,813), driven by the termination of the contract with RingCentral and cost saving initiatives. Other operating expenses amounted to KSEK -2,105 (-1,255).

Depreciation of tangible and intangible assets during the period amounted to KSEK -8,611 (-7,435). Depreciation attributable to the application of IFRS 16 on leases amounts to KSEK -855 (-1,386).

Income tax

The income tax of the Group for the period amounted to KSEK 325 (334) and refers to the change in deferred tax on identified intangible assets from the acquisition of GetID and Datacorp. The group's tax loss carry forwards are not capitalized on the balance sheet.

Result of the period

Gross profit for the period amounted to KSEK 25,856 (31,757) with a margin of 70 (76)%. Earnings before interest, tax, depreciation and amortization (EBITDA) amounted to KSEK 5,429 (7,464), corresponding to a margin of 15 (18)%. The decrease in EBITDA margin was primarily driven by lower revenues and a lower gross margin, but partly offset by lower operating costs. Operating profit amounted to KSEK -11,167 (-7,467) and the net result amounted to KSEK -11,090 (-7,689).

Figures in parentheses refer to the corresponding period last year for profit/loss items and year-end 2024 for balance sheet items, unless otherwise stated.

Financial position

Cash flow

Cash flow from operating activities during the second quarter amounted to KSEK 1,568 (2,217). After investments, the cash flow amounted to KSEK -3,456 (-4,903). During the period January to June 2025, the cash flow from operating activities amounted to KSEK 5,713 (6,560) and after investment to KSEK -4,410 (-6,233).

Intangible assets

Checkin.com has intangible assets valued at KSEK 172,058 (183,204), of which goodwill amounted to KSEK 107,380 (110,655) and right-of-use assets amounted to KSEK 0 (1,302). Goodwill arose in connection to the acquisitions of GetID and Datacorp.

Investments in intangible assets during the period amounted to KSEK 10,183 (12,776). The period's investment was fully related to capitalized development costs for new functionality in the Group's software.

Other intangible assets amounted to KSEK 11,461 (13,569) and consist of intangible assets that were identified upon the acquisition of GetID and Datacorp, as well as domains.

Cash and cash equivalents

As per June 30, 2025, cash and cash equivalents amounted to KSEK 19,998 (28,966). Net cash, after deducting interest bearing liabilities, amounted to KSEK 13,976 (20,667).

Equity ratio

As per June 30, 2025, total equity for the Group amounted to KSEK 185,337 (200,902). Equity ratio for the Group amounted to 87 (88)%.

Employees

At the end of the period, total number of employees, including consultants, was 42 (47) people, of which 19 (19) were employed by the Group.

Stock option program

The group has outstanding option programs for selected key personnel and board members. As of July 31, 2025, there were 889,630 options outstanding, linked to a total of 1,289,620 shares. This corresponds to a maximum dilution of 4%.

Customers

In the quarter, the Group had 94 revenue generating customers. iGaming was the largest vertical with 54% of net revenues, followed by Travel & Leisure (28%), Financial Services (13%) and Other (5%). The Group's five largest customers contributed to 49% of the total net revenues during the quarter.

Significant events during the quarter

The Annual General Meeting was held on May 26, 2025. During the meeting, it was decided to re-elect the board members Kristoffer Cassel, Christer Fåhraeus, Birgitta Hagenfeldt and Jonas Strömberg and to elect Tobias Lindh and Johan Qviberg as new board members; to establish a employee incentive program comprising a maximum of 420,000 options and a total maximum dilution of 1.4%; and to authorize the board of directors to issue shares in the event of an acquisition, or financing of an acquisition, or for general purposes up to a maximum dilution of 15%.

Significant events after the quarter

No significant events identified.

Consolidated statement of comprehensive income

Amount in KSEK	Apr – Jun		Jan – Jun		Full year
	2025	2024	2025	2024	2024
OPERATING INCOME					
Net revenue	18,103	20,385	36,929	41,670	77,477
Other operating income	931	1,053	1,573	2,641	3,805
Capitalized work for own account	5,025	7,120	10,183	12,776	22,992
Total operating income	24,060	28,558	48,685	57,087	104,274
OPERATING COSTS					
Direct costs	-5,422	-5,073	-11,073	-9,913	-20,482
Other external costs	-3,944	-3,931	-7,690	-7,643	-14,455
Personnel costs	-10,808	-15,956	-22,388	-30,813	-53,410
Depreciation and write-down	-7,985	-7,495	-16,596	-14,931	-30,999
Other operating costs	-772	-938	-2,105	-1,255	-2,327
Total operating costs	-28,932	-33,393	-59,852	-64,553	-121,673
Operating profit	-4,872	-4,835	-11,167	-7,467	-17,399
PROFIT AFTER FINANCIAL ITEMS					
Financial income	-3	11	59	50	79
Financial costs	-137	-294	-307	-606	-1,065
Profit after financial items	-5,012	-5,118	-11,415	-8,023	-18,385
Income tax	161	169	325	334	-430
NET RESULT	-4,852	-4,950	-11,090	-7,689	-18,815
Other comprehensive income					
<i>Items that may be classified to profit or loss</i>					
Translation differences of foreign operations	4,168	-2,651	-4,702	3,851	5,772
Other comprehensive income for the period	4,168	-2,651	-4,702	3,851	5,772
Total comprehensive income for the period	-684	-7,600	-15,792	-3,838	-13,042
Total comprehensive income for the period is attributable in its entirety to the parent company's shareholders					
Earnings per share, before dilution, SEK	-0.16	-0.17	-0.37	-0.26	-0.64
Earnings per share, after dilution, SEK	-0.16	-0.17	-0.37	-0.26	-0.64

Consolidated statement of financial position

Amount in KSEK	30 Jun		31 Dec
	2025	2024	2024
ASSETS			
Non-current assets			
Capitalized development costs	53,217	59,921	57,678
Goodwill	107,380	109,432	110,655
Other intangible assets	11,461	15,204	13,569
Right-of-use assets	-	2,682	1,302
Inventory	258	493	364
Other financial receivables	-	61	61
Total non-current assets	172,316	187,793	183,630
Current assets			
Trade receivables	14,522	10,835	11,956
Other receivables	587	2,373	1,153
Prepaid expenses and accrued income	5,518	4,828	3,247
Cash and cash equivalents	19,998	35,304	28,966
Total current assets	40,625	53,340	45,322
TOTAL ASSETS	212,941	241,133	228,951
EQUITY AND LIABILITIES			
Equity			
Share capital	747	747	747
Other paid-in capital	222,488	222,488	222,488
Translation reserves	10,489	13,269	15,190
Retained earnings, including profit for the period	-48,387	-26,703	-37,524
Total equity attributable for the owners of the parent company	185,337	209,801	200,902
Non-current liabilities			
Long term interest bearing liabilities	1,958	6,023	3,910
Long term lease liability	-	-	-
Deferred tax liability	3,111	2,715	3,509
Total non-current liabilities	5,069	8,738	7,418
Current liabilities			
Short term interest bearing liabilities	4,064	4,551	4,389
Short term lease liability	-	2,774	1,358
Trade payables	9,786	8,838	10,630
Tax liabilities	-451	253	76
Other liabilities	5,827	2,989	1,287
Accrued expenses and prepaid income	3,310	3,189	2,890
Total current liabilities	22,536	22,594	20,631
Total liabilities	27,604	31,331	28,049
TOTAL EQUITY AND LIABILITIES	212,941	241,133	228,951

Consolidated statement of changes in equity

Amount in KSEK	Attributable to the owners of the parent company				
	Share capital	Other paid-in capital	Translation reserves	Retained earnings incl. profit for the period	Total equity
2024					
Opening balance 1 January 2024	732	216,488	9,418	-18,860	207,778
Profit for the period	-	-	-	-18,815	-18,815
Other comprehensive income	-	-	5,772	-	5,772
Total comprehensive income	-	-	5,772	-18,815	-13,042
Transactions with shareholders					
Share-based compensation	-	-	-	66	66
Issue of shares	15	6,001	-	-	6,016
Issue of warrants	-	-	-	85	85
Total transactions with shareholders	15	6,001	-	151	6,167
CLOSING BALANCE 31 DECEMBER 2024	747	222,488	15,190	-37,524	200,902
2025					
Opening balance 1 January 2025	747	222,488	15,190	-37,524	200,902
Profit for the period	-	-	-	-11,090	-11,090
Other comprehensive income	-	-	-4,702	-	-4,702
Total comprehensive income	-	-	-4,702	-11,090	-15,792
Transactions with shareholders					
Share-based compensation	-	-	-	226	226
Issue of shares	-	-	-	-	-
Issue of warrants	-	-	-	-	-
Total transactions with shareholders	-	-	-	226	226
CLOSING BALANCE 30 JUNE 2025	747	222,488	10,489	-48,387	185,337

Consolidated statement of cash flow

Amount in KSEK	Apr - Jun		Jan - Jun		Full year
	2025	2024	2025	2024	2024
OPERATING ACTIVITIES					
Operating profit	-4,872	-4,835	-11,167	-7,467	-17,399
Financial items	-140	-283	-248	-556	-986
Reversal of depreciation	7,985	7,495	16,596	14,931	30,999
Other items not included in the cash flow	252	175	1,325	-732	-1,563
Cash flow from operating activities before changes in working capital	3,225	2,553	6,505	6,176	11,051
Cash flow from changes in working capital					
Increase/decrease in operating assets	-5,833	3,148	-4,496	-327	1,301
Increase/decrease in operating liabilities	4,176	-3,484	3,703	712	1,397
Change in working capital	-1,657	-336	-793	384	2,697
Cash flow from operating activities	1,568	2,217	5,713	6,560	13,748
INVESTING ACTIVITIES					
Investments in intangible assets	-5,025	-7,120	-10,183	-12,776	-22,992
Investments in tangible assets	2	-	-	-17	-28
Acquisition of subsidiaries	-	-	-	-	-
Deposits	-	-	61	-	-
Cash flow from investing activities	-5,023	-7,120	-10,122	-12,793	-23,020
FINANCING ACTIVITIES					
New share issue	-	6,016	-	6,016	6,016
Issue of warrants	-	-	-	-	85
New loans	-	-	-	-	-
Amortization of loans	-1,335	-1,869	-3,214	-3,727	-7,479
Cash flow from financing activities	-1,335	4,147	-3,214	2,289	-1,378
CASH FLOW FOR THE PERIOD	-4,791	-756	-7,624	-3,944	-10,650
Cash and cash equivalents at beginning of period	24,461	36,711	28,966	37,656	37,656
Exchange rate difference in cash and cash equivalents	329	-652	-1,343	1,592	1,960
Cash and cash equivalents, end of period	19,998	35,304	19,998	35,304	28,966

Income statement for the parent company

Amount in KSEK	Apr - Jun		Jan - Jun		Full year
	2025	2024	2025	2024	2024
OPERATING INCOME					
Net revenue	2,639	-	5,064	-	13,319
Other operating income	23	244	457	766	2,520
Capitalized work for own account	-	-	-	-	-
Total operating income	2,662	244	5,521	766	15,839
OPERATING EXPENSES					
Direct costs	-394	-742	-938	-1,468	-2,709
Other external costs	-1,294	-1,946	-2,594	-3,301	-7,021
Personnel costs	-2,960	-3,749	-5,807	-7,412	-13,409
Depreciation and write-downs	-	-	-	-	-
Other operating costs	-50	-259	-185	-326	-587
Total operating costs	-4,697	-6,696	-9,523	-12,507	-23,725
Operating profit	-2,035	-6,452	-4,002	-11,741	-7,886
PROFIT AFTER FINANCIAL ITEMS					
Financial income	-	-164	34	918	1,255
Financial costs	-135	-261	-296	-543	-969
Impairment of non-current financial assets	-	-	-	-	-29,300
Profit after financial items	-2,170	-6,877	-4,264	-11,366	-36,899
Group contribution	-	-	-	-	-15,970
Profit before taxes	-2,170	-6,877	-4,264	-11,366	-52,869
Income tax	-	-	-	-	-
NET RESULT	-2,170	-6,877	-4,264	-11,366	-52,869

Balance sheet for the parent company

Amount in KSEK	30 Jun		31 Dec
	2025	2024	2024
ASSETS			
Non-current assets			
Capitalized development costs	-	-	-
Other intangible assets	-	-	-
Inventory	-	-	-
Shares in subsidiaries	118,649	132,949	118,649
Other non-current assets	-	61	61
Total non-current assets	118,649	133,010	118,710
Current assets			
Trade receivables	-	1	1
Trade receivables group companies	24,339	50,875	29,351
Other receivables	2	445	2
Prepaid expenses and accrued income	462	1,049	718
Cash and cash equivalents	3,399	12,335	5,326
Total current assets	28,202	64,705	35,397
TOTAL ASSETS	146,851	197,715	154,107

EQUITY AND LIABILITIES			
Equity			
Share capital	747	747	747
Fund for development costs	-	-	-
Share premium fund	222,488	222,488	222,488
Retained earnings	-82,449	-29,712	-29,601
Profit for the period	-4,264	-11,366	-52,869
Total equity	136,523	182,158	140,765
Non-current liabilities			
Debt to credit institutions	1,958	6,023	3,910
Total non-current liabilities	1,958	6,023	3,910
Current liabilities			
Debt to credit institutions	4,064	4,551	4,389
Trade payables	2,216	3,573	3,527
Tax liabilities	-548	-19	-237
Other liabilities	2,281	163	420
Accrued expenses and prepaid income	357	1,265	1,333
Total current liabilities	8,370	9,534	9,432
Total liabilities	10,328	15,556	13,342
TOTAL EQUITY AND LIABILITIES	146,851	197,715	154,107

Additional information

Auditor

Checkin.com Group's auditor is Ludvig Kollberg, certified auditor at Moore KLN AB. This report has not been subject to review.

Certified Adviser

Checkin.com Group shares are listed on Nasdaq First North since May 20, 2021. Companies listed on Nasdaq First North are required to have a Certified Adviser which is, among other things, responsible for supervision and compliance. Checkin.com Group's Certified Adviser is DNB Carnegie Investment Bank AB.

Forward-looking statements

This report contains forward-looking statements. Such statements are subject to risks and uncertainties. Actual developments may differ materially from the expectations expressed, due to various factors, many of which are beyond the control of Checkin.com Group.

Number of shares

The Group has one share class and each share corresponds to one vote at the General Meeting. At the end of the period, total number of shares before dilution, amounted to 29,886,425. Adjusted for dilution, using the treasury method, the number of shares amounted to 29,886,425.

Parent Company

Checkin.com Group AB is the parent company of the group, which on June 30, 2025 consisted of two wholly owned operating subsidiaries; the Swedish company Checkin.com International AB and the Estonian company GetID OÜ. The formerly wholly owned subsidiaries Vorld OÜ and Datacorp OÜ were merged with GetID OÜ as of January 1, 2025.

Risks and uncertainties

Checkin.com Group AB is exposed to risks, particularly the dependence on key persons, the ability to manage growth and retain customers, plus the exposure to currency fluctuations. A more detailed risk analysis is presented in Checkin.com's latest published Annual Report.

Transactions with related parties

No transactions between the Group and its related parties significantly affected the Group's financial position or earnings during the period.

Presentation of the report

This report was submitted for publication on August 21, 07:30 CEST. At the same time, the report is available on Checkin.com's website. On the same day, Checkin.com will present the interim report for investors, analysts and media via a webcasted telephone conference, at 11:00 CEST.

This report has been made in a Swedish and English version. In the event of any discrepancies between the Swedish and English version, the Swedish version shall prevail.

Definitions

Rounding off

Since amounts have been rounded off in KSEK, the tables do not always add up.

Number of shares, after dilution

Average number of shares during the period, adjusted for dilution from issued options where both share price and strike price are taken into account.

Gross profit

Net revenue minus direct costs.

Gross margin

Gross profit as a percentage of net revenue.

Direct costs

Costs driven by increased volumes. This includes for example costs for cloud infrastructure and third party services.

EBITDA

Earnings before interest, taxes, depreciation and amortization.

EBITDA margin

EBITDA as a percentage of net revenues.

Cashflow after investments

Cashflow from operating and investing activities, excluding acquisitions and disposals of subsidiaries.

Net cash

Cash and bank balances minus interest bearing liabilities.

Net revenue growth, organic

Net revenue compared to the same period last year, for all entities now part of the group.

Net revenue growth, per share

Net revenue divided by the average number of shares during the period, compared to the same period previous year.

Net revenue LTM

Net revenue during the last twelve months.

Net revenue retention (NRR)

Net revenue during the quarter minus net revenue from new customers in the quarter, divided by net revenue during the previous quarter.

Net revenue retention LTM

Average NRR over the last four quarters raised to four.

Equity ratio

Total equity in relation to total assets.

Notes

Note 1 Accounting principles

Checkin.com AB follows the International Financial Reporting Standards (IFRS) and interpretations (IFRIC), as adopted by the EU. This interim report has been prepared according to IAS 34 Interim Financial Reporting and the Swedish Annual Accounts Act.

The interim report for the Parent Company has been prepared in accordance with Chapter 9 Interim Reports of the Swedish Annual Accounts Act. The Parent Company applies the Swedish Annual Accounts Act and RFR2 Accounting principles for legal entities. Under RFR2 the parent company of a legal entity applies all EU approved IFRS principles and interpretations within the framework defined by the Swedish Annual Accounts Act and taking into consideration the connection between accounting and taxation. The accounting principles applied are consistent with those described in Checkin.com's Annual Report for 2024.

Note 2 Currency exchange rates used in group consolidation

January – June

	Average rate		Rate at end-of-period	
	2025	2024	2025	2024
Euro (EUR)	11.0915	11.3894	11.1465	11.3595

The Board of Directors' assurance

The Board of Directors and the CEO confirm that this report provides a fair overview of the company's operations, position and results.

Stockholm, August 21, 2025

Kristoffer Cassel

Chairman of the Board

Christian Karlsson

Acting CEO

Christer Fåhraeus

Board member

Birgitta Hagenfeldt

Board member

Tobias Lindh

Board member

Johan Qviberg

Board member

Jonas Strömberg

Board member

Checkin.com in short

Checkin.com Group, founded in 2017, specializes in creating secure digital environments by helping businesses establish who is on the other side of the screen. The company's advanced KYC solutions streamline user registration, identification and login processes while also ensuring that their customers meet strict regulatory standards. This is achieved through a variety of advanced technologies that in real time verify user identities, assess ages, and scan official documents with high accuracy. The software also features biometric technologies to provide an extra layer of fraud prevention while enabling seamless experiences for end-users.

By offering a smooth and secure experience for users and flexibility and customer-focus for partners, the software drives both user trust and business growth. Since the foundation of the Company, the software platform has handled millions of checkin sessions from more than 170 countries.

Checkin.com Group currently targets primarily three main customer verticals, iGaming, Financial services and Travel & Leisure. The market for each vertical is growing, and Checkin.com sees great potential to grow together with their customers. The Group assesses that the global market for checkins is major, fragmented and unsaturated and the Group sees great opportunity for growth in additional verticals.

During 2021 Checkin.com Group acquired the rapidly growing Estonian tech company GetID and another Estonian technology company, DataCorp, with closing in January 2022. The Group is headquartered in Stockholm, Sweden, but operates and recruits globally to attract world-leading talent.

Checkin.com Group's share is since May 2021 listed on Nasdaq First North Growth Market under the trading symbol "CHECK".

For more information about the company visit: <https://group.checkin.com/investors/>

Vision and business idea

Checkin.com's vision is to change how end-users interact and identify themselves with products and brands online across the world. The business idea is to help the Group's customers grow faster by providing individually adapted KYC solutions that enable user friendly and regulatory compliant user verifications.

Business model

The group's product is delivered through a cloud-based software, Software as a Service, where customers mainly sign monthly subscriptions. Checkin.com offers different monthly packages at fixed prices, based on size and ancillary services. The subscription-based business model also includes a variable component for use beyond what is included in any monthly packages.

Upcoming reports and events

Interim report quarter 3 2025:	6 Nov 2025
Year-end report 2025:	12 Feb 2026
Annual report 2025:	9 Apr 2025
Interim report quarter 1 2026:	7 May 2026

Contact

Investor Relations
ir@checkin.com