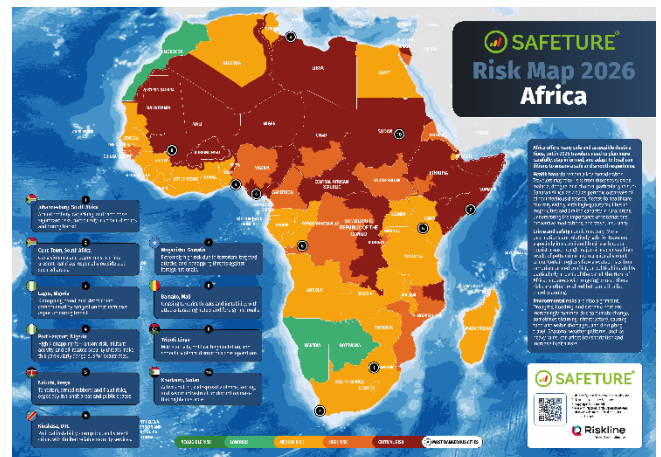


## Safeture Launches Continental Risk Maps for Global Travelers

Safeture, a leading technology provider for People Risk Management, announces the release of its updated 2026 Continental Risk Maps, covering six global regions: Africa, Europe, North America, South America, Asia, and Oceania.

Developed in collaboration with [Riskline](#), a globally recognized travel risk intelligence provider, the 2026 Continental Risk Maps offer a compelling overview of country-level travel risks worldwide. These maps are an essential tool for organizations, travel managers, assistance providers, and individual travelers, empowering them to fully understand today's security landscape and to prepare more effectively for international travel.

In addition to national risk ratings, the updated maps highlight cities where travelers may face elevated risks, including crime, civil unrest, terrorism, political instability, health concerns, and logistical disruptions. The purpose is to provide travelers and organizations with a practical starting point for assessing potential exposure before and during travel.



As global mobility continues to rise, so does the need for reliable, accessible, and actionable risk information. For organizations with employees traveling internationally, risk awareness must be paired with the ability to quickly locate, inform, and assist people during incidents.

“Travel risk is no longer something that can be managed reactively,” said Jonas Brorson, CMO at Safeture. “The 2026 Continental Risk Maps give travelers and organizations a simple but powerful way to understand where risks are elevated and where extra preparation may be needed. In that context, Safeture helps organizations turn awareness into action by enabling fast communication, location-based insight, and support when an incident occurs. It is an important part of a modern People Risk Management approach.”

The Risk Maps are freely available for download at [www.safeture.com/riskmaps](http://www.safeture.com/riskmaps).

For more information: [Safeture.com](http://Safeture.com) or contact [jonas.brorson@safeture.com](mailto:jonas.brorson@safeture.com)

### About Safeture AB

Safeture is a Sweden-based SaaS company that provides a market-leading People Risk Management platform to help organizations protect their people anywhere in the world. By combining real-time risk intelligence, location awareness, and instant mass communication, Safeture enables faster response, stronger duty of care, and better decision-making for global operations.

Trusted by medical assistance providers, security companies, insurers, and multinational organizations, Safeture supports travel, facility, and workforce safety through a scalable, partner-centric platform. Safeture AB is listed on Nasdaq First North Growth Market Stockholm (ticker: SFTR). Redeye Sweden AB is the company's Certified Adviser.