

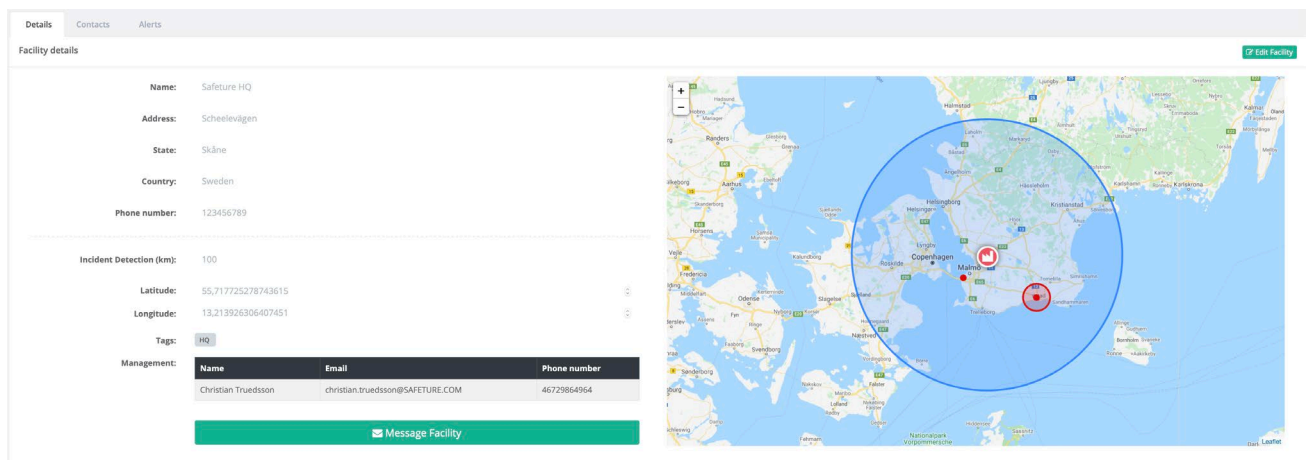
Safeture launches Facilities tool to simplify worker communication

Safeture AB today announced a new tool to help employers more easily keep track of their employees' locations and quickly communicate with them at critical times regardless of where they are. The new Facilities feature is an addition to Safeture's existing platform.

"The Facilities tool is a nice addition to our current software platform and will make it even easier for employers to keep their employees safe wherever they are," said Magnus Hultman, CEO of Safeture.

The Safeture Facility management solution keeps you informed and updated of incidents taking place nearby any company facility such as local offices, factories, warehouses, stores, or other types of establishments, displaying a geographical overview of company assets and communicating with users connected to the facility.

The Facilities tool is easy to set up and use. Workers do not even need to have access to the Safeture app. Their phone or email client is all you need to communicate. It is possible to connect any kind of user (App/Travel Booking or Core User) to one or more Facilities, and you are able to edit users connected to each facility. The solution automates alerts based on location and can communicate internal security procedures.



For additional information, visit www.safeture.com or contact:

Safeture CEO Magnus Hultman: +46 706 00 81 66. Magnus.hultman@safeture.com

About Safeture AB

Safeture (founded in 2009) is a Software as a Service (SaaS) company based in Sweden.

The company offers a complete cloud-based platform designed to manage employee safety and risk/crisis management. Through world-leading technology and innovative solutions, Safeture helps companies and organizations to protect what matters most – their employees.

The Safeture share is listed on NASDAQ First North Growth Market Stockholm (ticker: SFTR). Erik Penser Bank AB is the Certified Adviser. Ph: +46 8-463 83 00 E-mail: certifiedadviser@penser.se