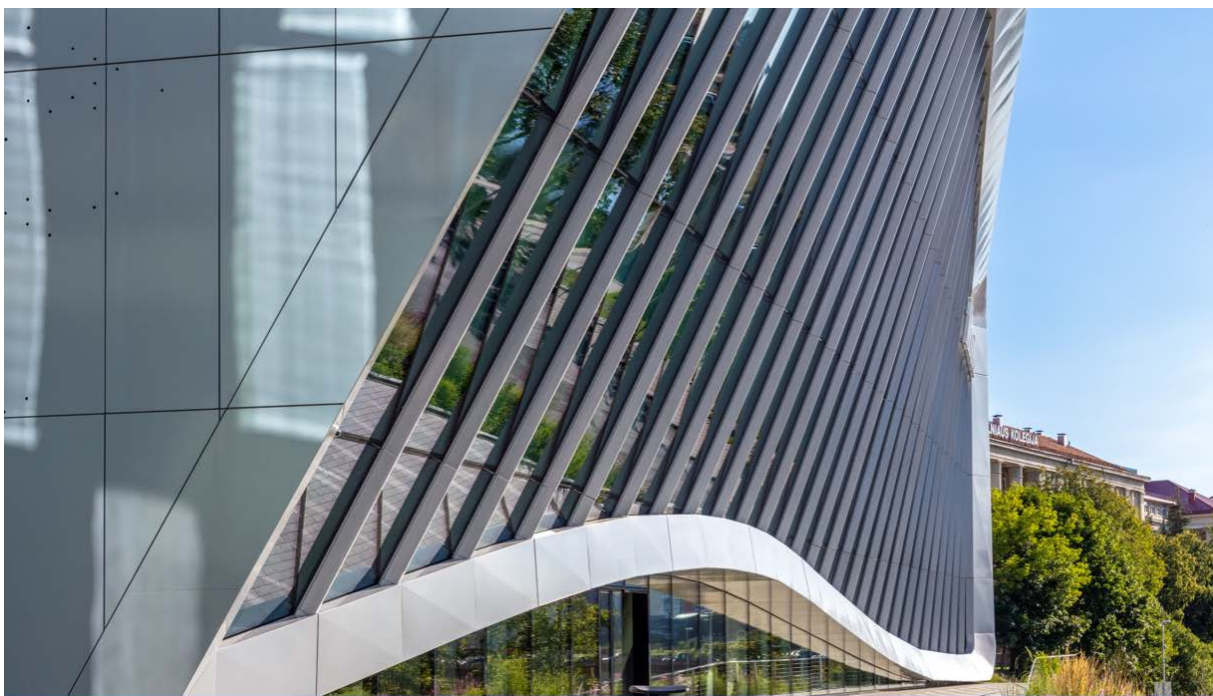


## Green Hall 3 – Brings sustainability and modern technology together

*This unique technology building, located in the thriving business district of Vilnius, brings the nature in with its architectural huge glass facades at the same time as it provides a large city view. An outstanding geothermal heating system is used which meets 100% of the building's thermal energy demand. As a result, this eco-friendly building stands for green productivity which minimizes the CO<sub>2</sub> impact on the environment as well as it demonstrates the future of green solutions. WICONA has supplied facades, windows and doors.*



The 2 800 sq. m. office building with Neris river as neighbor, is a place where modern technology meets durable solutions. By covering the building in glass façades, it opens the room between indoor and outdoor environment. In addition to a SG façade solution, which allows the transparency, WICONA has developed a special pilaster to fit and follow the shape of the 3D facade.

### **Natural light for well-being and productivity**

The shape of the building with its slanting glass facades provide an ultimate daylight as well as it helps to prevent the indoor environment from being too hot. Modern microclimate control system also ensures the comfort and that the indoor air is always fresh which improve the well-being for the employees. During the summer, an active chilled beam technology is used for ventilation and it can be controlled separately on each floor. The distribution of light during the day is ensured by an automatic facade blind control system which moves together with the sun.

## **Reduce stress and improve creativity**

The working zones are allowed for individual works as well as for team working. A recreational island has also been placed in the building for people to rest and collect energy. The high-speed wireless internet covering all outdoor spaces which means you have full availability to sit down in the green park and working. This flexible way of thinking around working places will increase the well-being for people who working in it. It will increase the creativity at the same time as it will minimize the stress.

You will find that the smallest details are focused on ecology – you can reach charging station for your electrical car and for those who travel on bicycle or exercise during lunch time are showers and changing rooms available for all.



Architect:	ARROW Architects, Archinova UAB
Metal builder:	Glasma Service UAB
Investor:	URBAN Investors
WICONA solutions:	WICTEC 50 semi SG solution: SG + integrated pressure plate WICSTYLE 75 EVO doors and WICLINE 75 EVO windows
Photos:	Evaldas Lasys

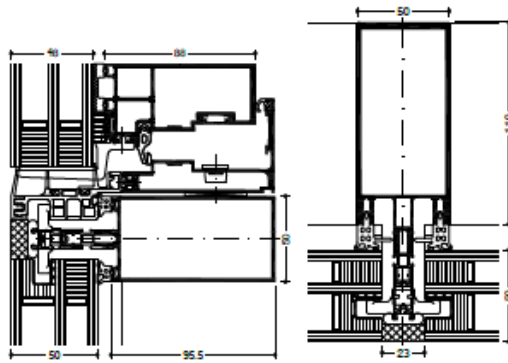


» WICTEC 50SG  
Structural glazing  
curtain wall



A characteristic feature of WICTEC 50SG structural glazing curtain wall is the flush design with slim silicone joints between the glass panes. The system offers all-glass technology both for vertical curtain walls and sloped roof glazing. Based on the standard WICTEC 50 stick system these options can be realised with simplified and economic processing and assembly, while assuring a high level of quality.

The WICLINE 90SG integrated opening sash complements the homogeneous full glass design with Italian style or parallel outward opening functionality.



WICTEC 50SG with integration sash WICLINE 90SG

WICTEC 50SG

**Technical performance:**

System width:	Internal aluminium profiles 50 mm External silicone joint 23 mm
Thermal insulation:	$U_i$ up to 1.6 W/(m <sup>2</sup> K)
Infill thickness:	up to 64 mm

**System technology:**

- ETA (European Technical Approval) granted
- Outstanding appearance
- Basic structure same as the WICTEC 50 curtain wall, with identical profile and gasket technology
- Fast and simple installation of IGUs, thanks to a special patented fastener
- Can also be combined with external cover profiles in various shapes and designs
- The ideal complement: WICLINE 90SG all-glass integrated sash with Italian style or parallel outward opening functionality

**System test results / CE product pass in accordance with DIN EN 13830**

Air permeability:	Class AE
Water tightness:	RE 750
Resistance to wind load:	2000 Pa, security ± 3000 Pa
Impact resistance:	Class E5 / I5
Approval:	ETA: 12/0551 (European Technical Approval)
Quality assurance:	Certified according to ISO 9001:2008
Environmental management:	Certified according to ISO 14001

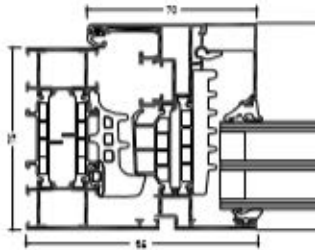


**WICONA**

» WICLINE 75 evo

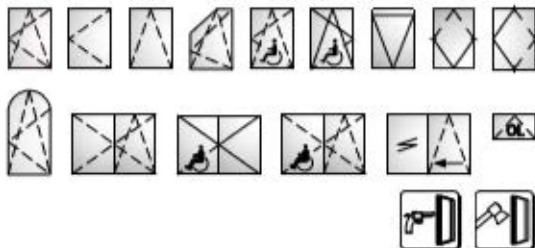


With 75 mm profile depth, WICLINE 75 evo features the highest thermal insulation properties and structural characteristics. With its superior technical performance this aluminium window is attuned to all architectural requirements of the future. In Switzerland WICLINE 75 evo has been the first metal window to be certified as Minergie-P module window.



**System test results / CE product pass in accordance with EN 14351-1:2006+A2:2016**

Air permeability:	Class 4
Water tightness:	E900
Resistance to wind load:	Class C5 / B5
Acoustic performance:	$R_w (C; C_w) = 47 (-1; -4)$ dB
Operating forces:	Class 1
Load bearing capacity of safety devices:	Fulfilled
Mechanical strength:	Class 4
Repeated opening / closing:	Class 3 (20000 cycles)
Corrosion resistance of the fittings:	Class 5
Burglar resistance:	RC1N, RC2N, RC2, RC3
Bullet resistance:	FB4 S, FB4 NS (depending on the profile combination)
Quality assurance:	Certified according to ISO 9001:2008
Environmental management:	Certified according to ISO 14001



**Technical performance:**

**Profile technology:**

- High insulation multi-chamber system in symmetric design, quality assured thermal insulator connection
- Patented corner and butt joint connection technology for high rigidity of frames and sashes
- Infill thickness up to 60 mm

**Thermal insulation:**

- $U_g$  values: up to 1.2 W/(m<sup>2</sup>K)
- $U_w$  values: up to 0.87 W/(m<sup>2</sup>K) for sashes, up to 0.72 W/(m<sup>2</sup>K) for fixed glazing, with triple glazing
- Certified as Minergie-P module  $U_w$  0.8 W/(m<sup>2</sup>K)

**Gasket concept:**

- Central gasket in three variants:
  - Circumferential installation without corner pieces
  - With formed corners, no adhesive required
  - Corner vulcanised frames

**Hardware:**

- Heavy duty system hardware with:
  - Visible hinges, powder coating or anodisation in all colours
  - Concealed hinges with integrated end position damping, opening angle max. 105°
- Sash weight:
  - Concealed hinges: up to 160 kg
  - Visible hinges: up to 200 kg
  - On demand: up to 300 kg
- Sash sizes (w x h): 1700 mm x 2500 mm, fanlight 2500 mm x 1700 mm
- Optional opening limiter

**Additional designs:**

- Concealed sash
- Classic design
- Integration frame for stick façades
- Fanlight with hand lever, cranked rod or motor
- Pivot window, horizontal or vertical
- Parallel sliding window, with or without force operation
- Italian style window
- Top-hung window
- Window doors with barrier free threshold, single or double casement door, inward and outward opening

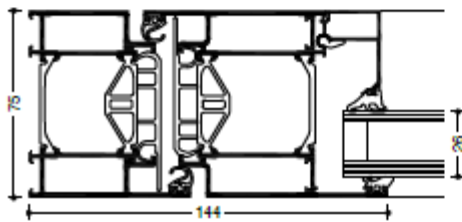
Compatible with the door series  
WICSTYLE 65 evo and WICSTYLE 75 evo



## » WICSTYLE 75 evo Hinged door



With a 75 mm profile depth, WICSTYLE 75 evo puts itself ahead in terms of thermal insulation and physical features. Its outstanding technical performance and application range make it the ideal door solution for all current and future requirements in architecture, both in new buildings and in renovations.



System test results / CE product pass in accordance with EN 14351-1:2006+A2:2016

Air permeability:	Up to class 2
Water tightness:	Up to 7A
Resistance to wind load:	Class C2
Acoustic performance:	$R_w$ (C; $C_p$ ) until 43 (-1; -4) dB
Operating forces:	Class 2
Load bearing capacity of safety devices:	Fulfilled
Mechanical strength:	Class 3
Repeated opening / closing:	Up to class 7 (500 000 cycles)
Impact resistance:	Class 1
Behaviour between different climates:	Up to class 2(e) 2(d)
Burglar resistance:	RC1N, RC2N, RC2, RC3
Bullet resistance:	Up to class FB4 NS
Quality assurance:	Certified according to ISO 9001:2008
Environmental management:	Certified according to ISO 14001

Specific application data see ifit product pass



### Technical performance:

#### Profile technology:

- High insulation multi-chamber system in symmetric design, quality assured thermal insulator connection
- For single and double leaf hinged doors
- For inward and outward opening
- For glass or panels with infill thickness from 6 mm to 60 mm
- Various threshold profiles with or without thermal break, also barrier free
- Fanlights, lateral glazings fixed or opening in combination with WICLINE evo window series

#### Thermal insulation:

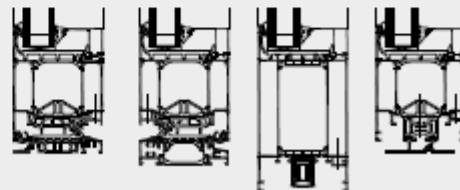
- $U_f$  values: from 1.6 to 1.8 W/(m<sup>2</sup>K), without foam inserts

#### Hardware:

- Butt hinge
- Screwed hinge
- Concealed hinge
- Leaf sizes (w x h): 1400 mm x 2520 mm
- Max. leaf weight: until 200 kg, for bullet resistance with additional hinges until 400 kg

#### Additional designs:

- Double action doors
- Integration frame for stick façades
- Burglar resistance in classes RC1 to RC3
- Bullet resistance in class FB4
- Leaf overlapping infill on one side or on both sides



WICSTYLE threshold options